

**URBAN POVERTY AND JUVENILE CRIME:
EVIDENCE FROM A RANDOMIZED HOUSING-MOBILITY EXPERIMENT***

draft date: April 20, 2000

Jens Ludwig

Greg J. Duncan

Paul Hirschfield

ABSTRACT

This paper uses data from a randomized housing-mobility experiment to study the effects of relocating families from high- to low-poverty neighborhoods on juvenile crime. Outcome measures come from juvenile arrest records taken from government administrative data. Our findings seem to suggest that providing families with the opportunity to move to lower-poverty neighborhoods reduces violent criminal behavior by teens.

JEL: K42, I30

Correspondence:

Jens Ludwig
Georgetown Public Policy Institute
3600 N Street, NW, Suite 200
Washington, DC 20007
ludwigj@gunet.georgetown.edu

* This research is part of an ongoing project with Helen F. Ladd funded by the U.S. Department of Housing and Urban Development, as well as by the Georgetown University Graduate School of Arts and Sciences, and the Spencer, Andrew Mellon, Smith Richardson, and William T. Grant foundations. This paper was written in part while the first author was visiting scholar to the Northwestern University / University of Chicago Joint Center for Poverty Research and NAE / Spencer Foundation Postdoctoral Fellow. Thanks to Christina Clark, John Goering, Lakshmi Iyengar, and Debi Magri-McInnis for their assistance and to seminar participants at the University of California at Berkeley, Duke University, Georgetown University, Johns Hopkins University, Northwestern University, the University of Wisconsin-Madison, the U.S. Department of Housing and Urban Development, Child Trends, the annual meetings of the Association of Public Policy Analysis and Management, the American Economic Association, and the Population Association of America, and to Joe Altonji, John Cawley, Philip Cook, William Dickens, David Grissmer, Christopher Jencks, Jeffrey Kling, Lance Lochner, Susanna Loeb, James Lynch, Tracey Meares, Bruce Meyer, John Mullahy, Daniel Nagin, Steve Rivkin, James Rosenbaum, Mark Shroder, Gary Solon, Christopher Taber, Wilbert van der Klaauw, Edward Glaeser and the referees for helpful comments. Any errors are our own.

I. INTRODUCTION

Crime has profound effects on the quality of life in the United States, imposing social costs on the order of \$1 trillion per year [Anderson 1999]. Of particular concern is the possibility that the volume of crime in America may be related in part to the spatial concentration of low-income families in high-poverty, high-crime urban neighborhoods. Criminal activity may be “contagious” in high-crime areas because the social penalties for committing crime or the probability of arrest may be lower than in other neighborhoods [Sah 1991; Cook and Goss 1996; Sampson, Raudenbush and Earls 1997; Schrag and Scotchmer 1997], as may be the costs of acquiring an important “input” for crime – confederates [Reiss 1988]. Neighborhood poverty may also affect the actual or perceived returns to schooling and work by affecting access to quality schools, jobs, and role models [Wilson 1987; Ludwig 1999], which may depress the opportunity costs of crime. While the existence of neighborhood- or peer effects receives some support from findings that the variation in crime rates across cities exceeds what is predicted by measurable city characteristics [Glaeser, Sacerdote and Scheinkman 1996], more definitive evidence is currently not available.

Studies using individual-level data have produced mixed findings on whether census tract, ZIP code or peer-group characteristics are correlated with teen problem behavior [Jencks and Mayer 1990; Ellen and Turner 1997; Matsueda and Anderson 1998]. Interpretation of these findings is complicated by the fact that families typically have some degree of choice over where they live and with whom they associate. As a result, correlations between individual behaviors and neighborhood or peer characteristics may reflect in part or whole the effect of unmeasured variables associated with residential or peer-group selection [Evans, Oates and Schwab 1992; Manski 1993; Moffitt 1998].

Only one previous study focuses on crime and attempts to directly control for the selection problem (using instrumental-variables methods), and finds some evidence that peer behaviors influence self-reported juvenile crime [Case and Katz 1991].¹

The present paper examines the effects of neighborhoods on juvenile criminal activity using data generated by a randomized housing-mobility experiment. Since 1994, the U.S. Department of Housing and Urban Development's (HUD) Moving to Opportunity (MTO) experiment has assigned a total of 638 families from high-poverty Baltimore neighborhoods into three different "treatment groups": *Experimental group* families receive housing subsidies, counseling and search assistance to move to private-market housing in low-poverty census tracts (poverty rates under 10 percent); *Section 8-only group* families receive private-market housing subsidies with no program constraints on relocation choices; and a *Control group* receives no special assistance under MTO. The randomized experimental design of MTO thus breaks the link between family residential preferences and adolescent outcomes, and helps us overcome the endogenous-membership problem found with previous studies.

Our outcome measures come from juvenile arrest records obtained from the Maryland Department of Juvenile Justice (DJJ), which are not subject to the self-reporting problems associated with survey studies of criminal offending² and are less susceptible to problems of sample attrition. The drawback is that arrest records reflect the combined behaviors of juveniles and local criminal justice systems. As we discuss below, this may lead us to slightly understate any reductions in crime caused by MTO, or overstate any increases in offending. Analysis of the MTO data suggests large reductions in arrests for violent crimes among experimental and Section 8-only teens relative to controls, though there may also be some increase in property-crime arrests for teens in the experimental group. We

hasten to note that because participation in the MTO program is voluntary, our estimates of the effects of relocation may be different from the effects of relocating a randomly selected group of families from poor areas.

The next section describes the MTO experiment in greater detail. The third section discusses our conceptual framework, the fourth section discusses the data, and the fifth section presents the key results. The final section discusses the implications of our findings.

II. THE MOVING TO OPPORTUNITY DEMONSTRATION

The MTO demonstration is based in five cities: Baltimore, Boston, Chicago, Los Angeles, and New York. The present paper uses data from the Baltimore site, where eligibility was restricted to low-income families with children who lived in public housing in one of the five poorest census tracts in the city. The average poverty rate in these tracts in 1990 was 67 percent [Goering, Carnevale and Teodoro 1996], with a crime rate more than three times that of the state as a whole (194 versus 61 per 1,000 residents) [Maryland State Police 1997].³

The program was publicized in the baseline tracts by the Housing Authority of Baltimore (HAB) and a local nonprofit, the Community Assistance Network (CAN). Families who volunteered for the program were added to the MTO waiting list. Families were drawn off the MTO waiting list over time on the basis of a random lottery, and then randomized into one of the three MTO treatment groups. Both types of randomization were conducted by Abt Associates.

Families in the experimental and Section 8-only groups were offered Section 8 housing vouchers or certificates, which provide subsidies to lease private-market housing. As part of the program's design, the Section 8 subsidies provided to the experimental group can only be redeemed

for housing in census tracts with 1990 poverty rates less than 10 percent. Families in both groups had up to 180 days to identify a suitable rental unit and sign a lease.

The experimental group also received housing-search assistance and life-skills counseling from CAN. Relocators in both the experimental and Section 8-only groups were required to sign leases for one year. Those who wished to move again before the initial lease expiration date were not eligible for a new Section 8 subsidy, although families could move thereafter with no restrictions. CAN contacted experimental families twice following relocation; otherwise, post-program monitoring was limited [Goering, Carnevale and Teodoro 1996].

III. CONCEPTUAL FRAMEWORK

The potential effects of MTO on juvenile crime can be highlighted using the reduced-form equation (1) from Moffitt [1998]. The “supply” of criminal offenses by teen (i) in neighborhood (n) in period (t), Y_{int} , is a function of teen (i)’s family characteristics, X_{int} , the characteristics and criminal involvement of others in the neighborhood (X_{-int} and Y_{-int}), and unmeasured variables specific to the neighborhood (\hat{a}_{nt}) and teen (\hat{a}_{int}).

$$(1) \quad Y_{int} = \hat{a}_0 + \hat{a}_1 X_{int} + \hat{a}_2 X_{-int} + \hat{a}_3 Y_{-int} + \hat{a}_{nt} + \hat{a}_{int}$$

Identifying \hat{a}_2 and \hat{a}_3 in equation (1) using non-experimental data is complicated by possible correlation between neighborhood characteristics (X_{-int} and Y_{-int}) and unmeasured individual-level variables (\hat{a}_{int}). The MTO experiment overcomes this problem by randomly assigning families into different mobility treatment groups. Since assignments to treatment groups but not relocation outcomes are random, we initially focus on comparing the mean outcomes of families according to their treatment-group assignment. This “intent-to-treat” (ITT) effect is calculated by estimating equation (2), where Z

indicates whether families are assigned to the experimental ($Z=1$) or control group ($Z=0$). (The analysis is identical for the effects of the Section 8-only treatment). The regression is estimated using a panel of person-quarter observations for MTO teens where t indexes quarters since random assignment ($t \geq 0$). The use of panel data allows us to control for common trends in crime over time by including indicators for quarter since randomization (α_t) and calendar quarter (ϵ_{qt}), thus improving the precision of our estimates. We also control for a vector of pre-program characteristics (X_{in}) to adjust for chance differences in these variables across groups, and estimate robust standard errors that account for the panel structure of the data and the presence of multiple teens from the same family.

$$(2) \quad Y_{int} = \alpha_0 + \alpha_1 Z_{in} + \alpha_2 X_{in} + \alpha_t + \epsilon_{qt} + \tilde{\delta}_{int}$$

Also of interest are the “effects of treatment on the treated” (TOT), which can be recovered if assignment to the experimental or Section 8-only groups have no effect on families who do not relocate through MTO (“non-compliers”).⁴ This assumption seems reasonable since the only other service provided to the experimental group is the CAN counseling, and even intensive youth counseling programs appear to have modest if any effects on delinquency [Donohue and Siegelman 1998]. The TOT effect (equation 3) compares outcomes for experimental and control group families who *would* comply with the experimental treatment, known as “potential compliers” ($C=1$). Actual compliance with the MTO experimental treatment (indicated by $D=1$) is only observed among families who are assigned to the experimental group.

$$(3) \quad TOT = E[Y | Z=1, C=1] - E[Y | Z=0, C=1]$$

The TOT effect is estimated by applying two-stage least squares to equation (4) using Z as an instrument for D , which in large samples will converge to the ITT effect divided by the probability of

compliance with the assigned treatment [Bloom, 1984]. The mean outcome of control teens who would have complied with the experimental group, the “control complier mean” (CCM), is given by equation (5) [Katz, Kling and Liebman, 1999].

$$(4) \quad Y_{int} = \tilde{a}_0 + \tilde{a}_1 D_{in} + \tilde{a}_2 X_{int} + \tilde{a}_t + \tilde{e}_{it} + \zeta_{in}$$

$$(5) \quad CCM = E[Y | Z=0, C=1] = E[Y | Z=1, C=1] - TOT$$

Since MTO simultaneously changes all of the neighborhood characteristics of the treatment-group compliers (X_{int} , Y_{int} , and \tilde{a}_{nt}), we cannot identify the specific mechanisms through which neighborhoods affect juvenile crime (\hat{a}_2 and \hat{a}_3 in equation 1). On net we expect these changes to reduce teen involvement in violent crimes, since MTO moves families to more affluent, lower-crime neighborhoods. The effect of MTO on property crime is more ambiguous, since more affluent neighborhoods may also provide more lucrative opportunities for theft.⁵

The final complication is that our outcome measure reflects arrests rather than criminal activity. Since the probability of arrest is less than one, our analyses of arrest data provide lower-bound estimates for the effects of MTO on criminal offending that are proportional to the probability of arrest. A more troublesome possibility is that the probability of arrest for MTO teens may be higher in more affluent areas; a suitably large increase in this probability could cause experimental-group arrest rates to *increase* even if criminal offending *decreases*. Maryland police data suggest that the probability of arrest for crimes reported to the police (the “clearance rate”) is similar across areas.⁶ But because victims are somewhat less likely to report less-serious crimes to the police in cities than in suburbs [Laub 1981],⁷ our estimates may understate any reductions in minor offenses among experimental teens and overstate any increases.

Differences in false arrests across areas will also bias our findings, although we assume that these constitute only a minority of arrests and thus are unlikely to substantially distort our estimates. We test this assumption by analyzing arrests by separate crime categories to isolate arrests for disorderly conduct, resisting arrest, and assaulting a police officer, which previous case studies suggest are disproportionately associated with false arrests [Chevigny 1969; Ogletree *et al.* 1995]. Second, we produce qualitatively similar findings when we focus on convictions rather than arrests, which should be less susceptible to discrimination because courtroom behaviors are presumably more easily monitored than street-level police practices.⁸

IV. DATA

All families were required to complete a self-administered survey questionnaire designed by Abt in order to enroll in the MTO program. Abt also recorded the locations of the initial program moves by families in the experimental and Section 8-only groups, as well as follow-up addresses identified through passive and active tracking methods from July to December of 1997.⁹

Our key outcome measures come from official arrest histories maintained by the Maryland DJJ, which include the charges for which juveniles (under 18) are arrested, the date and disposition of the arrest, and other information.¹⁰ A DJJ staff member manually searched the state's arrest database by date of birth and name to identify offense histories current through March, 1999 for the 1,406 MTO participants born in 1977 or later. Our estimates will be proportional to the match rate produced by this process, which we believe is reasonably high for two reasons: first, separate matches conducted by the DJJ produced quite similar results¹¹; second, the arrest rate implied for MTO teens is quite similar to what has been found in other studies for similar samples of teens.¹² Another source of attrition

comes from moves out of state, although only three MTO families had done so by 1997.

A total of 279 MTO teens were arrested 998 times in the pre- and post-program period for charges ranging from shoplifting to attempted murder. We classify these crimes into three categories [see Ludwig, Duncan and Hirschfield 2000 for details]: Violent crimes (292 arrests, of which 77 percent are assaults and 16 percent are robberies); Property crimes (354 arrests, of which 55 percent are larcenies / thefts, 25 percent are motor vehicle thefts, and 20 percent are burglaries), and “Other” crimes (352 arrests, 50 percent of which are drug offenses, and 19 percent of which are for disorderly conduct or resisting arrest).¹³ As argued above, we expect any effects of law enforcement discrimination to be most pronounced for arrests in this last category.

V. EMPIRICAL RESULTS

This section begins with a brief description of the characteristics of the MTO population and their relocation outcomes. We then present our estimates for the program impacts on arrests.

A. Baseline Characteristics of the MTO Population

As shown in Table I, nearly all of the MTO households are headed by unmarried African-American women, the large majority of whom were receiving AFDC at baseline.¹⁴ Over three-quarters of household heads who volunteered for the program reported that escaping from gangs and drugs was the first or second most important reason for enrolling in MTO, which is not surprising given that around half of all families reported that someone in the household had been the victim of a crime during the previous six months.¹⁵ On average, 3.7 years had passed between the date of the family’s random assignment and March, 1999, the end of our observation period. The vectors of means for the baseline characteristics are similar across groups.¹⁶

Table II presents similar background information for the MTO teens “at risk” for criminal involvement during the post-program period, which we initially define as the 336 teens who are at least 11 but less than 16 years of age at the time of random assignment. We exclude children under 11 from our analytic sample because arrests to younger children are very rare [OJJDP 1996], and we exclude older children since we wish to focus on teens who are still under the jurisdiction of the juvenile justice system (under 18) during the post-program period. Table II shows that the pre-program arrest rates for property and other offenses are somewhat higher for the experimental than other groups. We believe these differences are most likely due to random chance because our discussions with Abt suggest that randomization was conducted properly, and because there are no systematic differences across groups in the full set of baseline variables for MTO families in the Baltimore (Table I) or Boston sites [Katz, Kling, and Liebman 1999].

B. Relocation Outcomes

Given the restrictions placed on the location decisions of experimental families, it is perhaps not surprising that a smaller proportion relocated through MTO relative to those assigned to the Section 8-only group (54 versus 73 percent).¹⁷ The median program-mover in the experimental and Section 8-only groups relocated within nine and four months of random assignment, respectively.¹⁸ While a larger proportion of Section 8-only families relocate through MTO, experimental relocators are more dispersed throughout the larger metropolitan area, as seen by their initial post-program addresses shown in Figure I.

More detailed relocation information is shown in Table III. Most program-movers in the experimental group were still in very low-poverty census tracts (<10 percent poverty rate) as of

December, 1997, even though their initial leases had expired and they were free to relocate to other neighborhoods. In contrast, most Section 8-only families who relocated did not voluntarily move to very low-poverty neighborhoods, and less than five percent of control families had moved on their own to very low-poverty tracts by the end of 1997.

C. Effects of MTO on Juvenile Arrests

Figures II through IV present the regression-adjusted number of arrests for violent, property, and other crimes per 100 teens for each of the three MTO treatment groups by quarter. Our regression adjustment controls for random treatment group differences in the background variables shown in Table II.¹⁹ As noted above, these estimates are calculated using the cohort of MTO teens who are at least 11 but less than 16 years old at random assignment. We exclude from our panel person-quarters for this cohort that follow the participant's eighteenth birthday. The figures suggest that starting four to six quarters after randomization, the experimental and Section 8-only groups experience a reduction in violent-crime arrests relative to controls. The figures also suggest that relative to controls, experimental teens may have somewhat higher rates of property-crime arrest, while Section 8-only teens may have fewer arrests for other crimes.

More formally, Table IV shows that on average, 2.7 percent of control-group teens are arrested for a violent crime during each quarter of the post-program period, with around 3 arrests per 100 teens per quarter (the "prevalence" and "incidence" of arrest, respectively). After controlling for the background variables from Table II by estimating equation (2) using OLS (bottom panel, Table IV), we find that the prevalence and incidence of arrests for violent crimes for experimental teens equal around one-half of the control-group averages ($p < .10$ and $p < .05$, respectively). A reduction in

robbery arrests accounts for half of this difference, though robberies account for only 16 percent of all violent-crime arrests to the MTO sample as a whole.

Experimental teens may also experience an increase in property arrests, though this evidence is somewhat more ambiguous: While the differences in raw means are statistically significant at the 5 percent level (top panel of Table IV), these differences are no longer statistically significant when we adjust for pre-program characteristics (bottom panel). Nearly three-quarters of the increase in property-crime arrests is accounted for by larceny-thefts, which account for only 55 percent of all property-crime arrests for the MTO sample as a whole.

We also find that the prevalence and incidence of violent-crime arrests for the Section 8-only group are around one-half the rate observed for the control group, though only the effect on the incidence of arrest is statistically significant (at the 10 percent level) even after regression-adjusting for pre-program characteristics. As with the experimental treatment, around half of the reduction in violent-crime arrests comes from reductions in robbery arrests.

The top panel of Table V suggests that our findings are robust to decisions about how to control for random differences in pre-program arrests, since we obtain qualitatively similar results when we focus only on those teens with no pre-program arrests. Table V also shows that the results are similar when we stratify the sample by gender, although the experimental-treatment effects for girls are smaller in both absolute and proportional terms than those for boys.

Finally, Table VI presents estimates for the effects of treatment-on-the-treated. The TOT effects for both MTO treatments on the prevalence and incidence of violent-crime arrest equal one-half or more of the control-complier mean (calculated from equation 5 above),²⁰ with the estimated TOT

effect slightly larger for the experimental than Section 8-only treatment.

Table VI also shows that the post-program arrest rates for families in the experimental and Section 8-only groups who move through MTO are somewhat higher than those of the non-compliers (particularly for violent and property crimes).²¹ We also find that *pre-program* arrests to teens have a positive effect on the family's probability of making an MTO move.²² The data thus suggest that families with teens at above-average risk for arrest during the post-program period were more likely to relocate through MTO. This finding runs counter to the commonly-held view that families with "better" outcomes are more likely to self-select into more affluent areas [Evans, Oates and Schwab 1992], and raises the possibility that non-experimental estimates may *understate* neighborhood effects on adolescent behaviors.

D. Sensitivity Analysis

The advantage of the linear estimators that we use to regression-adjust our treatment-group comparisons is that they facilitate a straightforward calculation of the TOT effects using two-stage least squares. Yet for the analysis of the number of arrests (incidence) and other count data, a compound-Poisson regression model such as the negative-binomial will be more efficient [Grogger 1990; Cameron and Trivedi 1998]. When we replicate our analyses for the incidence of arrest using the negative binomial, the findings are qualitatively similar to those in Table IV.

Our results are also generally robust to our decisions about which age cutoffs should be used in constructing the analytic sample. Adding teens age 17 at randomization to our analytic sample increases the magnitude (in absolute value) of the experimental and Section 8-only effects on violent-crime arrests. Including children ages 9 and 10 at randomization reduces the experimental ITT effect

on violent arrests (because young children commit very few violent crimes) and improves the precision of the estimated increase in property offending (because the relatively few crimes that are committed by young children tend to be property offenses) [Snyder and Sickmund 1999]. A similar attenuation in the estimated effect of MTO on violent offending results from using a “rolling cohort” approach, in which the sample includes every teen-quarter in which an MTO participant is at least 11 but less than 18 years old, because fully 70 percent of the teen-quarters added to the sample come from those younger than 11 at randomization.

VI. DISCUSSION

In this paper we present evidence suggesting that the offer to relocate families from high- to very low-poverty neighborhoods (census tracts with poverty rates below 10 percent) reduces juvenile arrests for violent offenses on the order of 30 to 50 percent of the arrest rate for controls. There are also signs of a similar reduction in violent arrests for the Section 8-only group. On the other hand, property-crime arrests may increase among experimental teens relative to controls, although this effect is no longer statistically significant once we control for random differences in pre-program characteristics across treatment groups. In any case, the overall pattern is consistent with previous neighborhood-level findings suggesting that high-poverty areas have on average higher rates of violent crime but lower rates of property crime than low-poverty areas [Dunworth and Saiger 1994; Dumanovsky, Fagan and Thompson 1999].

Do these findings represent actual behavioral changes among MTO teens caused by changes in neighborhood conditions? One alternative explanation is that differences in arrests across groups reflect differences in the behavior of local criminal justice systems rather than MTO teens. Some evidence

against this hypothesis comes from the fact that the post-program neighborhoods of the three MTO treatment groups have virtually identical clearance rates. Nevertheless, there remains the possibility that MTO teens are subject to heightened scrutiny in low-poverty areas, and national victimization surveys suggest that victims are more likely to report less-serious crimes to the police in suburbs than cities. If the probability of arrest is higher for experimental than control teens, we will under-state any reductions in offending and over-state any increases in crime. Put differently, we are more confident that actual changes in offending are responsible for the reductions in violent arrests compared with the increase in property arrests.

Another alternative explanation for our findings is that they may be artifacts of the slightly higher rates of pre-program offending for the experimental group, because of either a deterrent effect (if teens are “scared straight”) or an incapacitation effect (when teens are incarcerated). We address this possibility in part by regression-adjusting for a detailed set of dummy variables capturing the number of pre-program arrests in each of our three crime categories. We also obtain similar results for Section 8-only teens, who have very similar pre-program arrest rates to the controls, and when we restrict our analysis to teens with no pre-program arrests.²³

Our findings could in principle be due to a general “moving effect” that temporarily disrupts teen involvement in anti-social peer groups, rather than to the specific effects of moving to lower-poverty or lower-crime neighborhoods. The effects of lingering social ties are illustrated by our finding that two-fifths of the 23 arrests to experimental teens whose families moved out of Baltimore City occurred within the city.²⁴ Yet our findings that the TOT effects on violent crime are somewhat larger for the experimental than Section 8-only treatment is less consistent with a generic moving effect than with a

“dose-response” effect (since experimental compliers move to lower-poverty neighborhoods than do Section 8-only compliers).²⁵

Taken together, our findings suggest that moving MTO families from high- to low-poverty neighborhoods reduces juvenile involvement in violent crime. While there remains some uncertainty about the mechanisms underlying these effects, remarkably similar findings have been obtained for the Boston MTO site by Katz, Kling and Liebman [1999]. Survey data from Boston suggests experimental and Section 8-only ITT effects on problem behavior on the order of 30 to 75 percent for boys 6 to 15 years of age, and 15 to 75 percent for girls. Data from both the Baltimore and Boston MTO sites also show that families whose children are most likely to exhibit problem behaviors during the post-program period are also more likely to relocate through MTO. This finding runs counter to the common assumption that families predisposed towards “better” outcomes are more likely to self-select into lower-poverty areas.

Generalizing from our findings is complicated by the fact that MTO participants are a self-selected group of public housing residents. Nevertheless, these results are at least suggestive that policies designed to change the spatial concentration of poverty in America may influence the overall volume of violent crime. While it is possible that property offending could increase among relocators, any increases in property offending among experimental-group MTO teens occur disproportionately among the least-serious property offenses (larceny-thefts), which on average impose \$370 in costs to society per crime [Miller, Cohen and Wiersema 1996]. On the other hand, reductions in violent crime occurs disproportionately among robberies, which have social costs on the order of \$8,000 per crime.

Determining whether such policies are desirable from society’s perspective depends in part on

the full range of impacts on the families who are relocated. Separate analyses of data from the Baltimore and Boston MTO sites reveal statistically significant treatment effects on welfare receipt, welfare-to-work transitions, criminal victimization, and the physical health of children and mental health of adults [Katz, Kling and Liebman 1999; Ludwig, Duncan and Pinkston 1999], although little is yet known about changes in education and other outcomes. Judging the desirability of housing-mobility programs also requires information about effects on the other residents of both host and baseline neighborhoods, about which almost nothing is currently known. Measuring MTO's impacts on a full range of outcomes over the longer run, and developing a better understanding of why neighborhoods affect juvenile crime and other problem behaviors, remain important goals for future research.

AUTHOR AFFILIATIONS

GEORGETOWN UNIVERSITY AND NATIONAL CONSORTIUM ON VIOLENCE

RESEARCH

NORTHWESTERN UNIVERSITY

NORTHWESTERN UNIVERSITY

REFERENCES.

- Aaronson, Daniel, "Using Sibling Data to Estimate the Impact of Neighborhoods on Children's Educational Outcomes," Journal of Human Resources, XXXIII(1998), 915-946.
- Akerlof, George, and Janet Yellen, "Gang Behavior, Law Enforcement, and Community Values." Values and Public Policy. Henry J. Aaron, Thomas E. Mann and Timothy Taylor, eds. (Washington, DC: Brookings Institution Press, 1994).
- Anderson, David, "The Aggregate Burden of Crime." Journal of Law and Economics. XLII(1999), 611-642.
- Biderman, Albert D. and James P. Lynch, Understanding Crime Incidence Statistics: Why the UCR Diverges from the NCS (New York, NY: Springer-Verlag, 1991).
- Bloom, Howard S., "Accounting for No-Shows in Experimental Evaluation Designs," Evaluation Review, VIII(1984), 225-246.
- Blumstein, Alfred, Jacqueline Cohen, Jeffrey A. Roth, and Christy A. Visher, Criminal Careers and "Career Criminals," Volume 1. (Washington, DC: National Academy Press, 1986).
- Cameron, A. Colin and Pravin K. Trivedi, Regression Analysis of Count Data. (Cambridge, UK: Cambridge University Press, 1998).
- Case, Anne, and Lawrence Katz, "The Company You Keep: The Effects of Family and Neighborhood on Disadvantaged Youth." National Bureau of Economic Research Working Paper No. W3705, 1991.
- Chevigny, Paul, Police Power: Police Abuses in New York City (New York, NY: Pantheon, 1969).
- Cook, Philip J. and Kristin A. Goss, "A Selective Review of the Social-Contagion Literature,." Sanford Institute for Public Policy Studies, Duke University mimeo, 1996.
- Donahue, John J. and Peter Siegelman, "Allocating Resources Among Prisons and Social Programs in the Battle Against Crime," Journal of Legal Studies, XXVII(1998), 1-43.
- Dumanovsky, Tamara, Jeffrey Fagan, and Philip Thompson, "The Neighborhood Context of Crime in New York City's Public Housing Projects," Columbia University School of Public Health, mimeo, 1999.
- Dunworth, Terence and Aaron Saiger, Drugs and Crime in Public Housing: A Three-City Analysis

(Washington, DC: U.S. Department of Justice, National Institute of Justice, 1994).

Ehrlich, Isaac, "Participation in Illegitimate Activities: An Economic Analysis," Journal of Political Economy, LXXXI(1996), 521-565.

Ellen, Ingrid Gould and Margery Austin Turner, "Does Neighborhood Matter? Assessing Recent Evidence," Housing Policy Debate, VIII(1997), 833-866.

Evans, William, Wallace Oates and Robert Schwab, "Measuring Peer Group Effects: A Study of Teenage Behavior," Journal of Political Economy, C(1992), 966-991.

Glaeser, Edward L., Bruce Sacerdote, and Jose A. Scheinkman, "Crime and Social Interactions," Quarterly Journal of Economics, CXI(1996), 507-548.

Goering, John, Katherine Carnevale, and Manual Teodoro, Expanding Housing Choices for HUD-Assisted Families (Washington, DC: U.S. Department of Housing & Urban Development, 1996).

Grogger, Jeffrey, "The Deterrent Effect of Capital Punishment: An Analysis of Daily Homicide Counts," Journal of the American Statistical Association, LXXXV(1990), 295-303.

Hindelang, Michael J., Travis Hirschi, and J. G. Weis, Measuring Delinquency (Beverly Hills, CA: Sage, 1981).

Jencks, Christopher and Susan E. Mayer, "The Social Consequences of Growing Up in a Poor Neighborhood," Inner-City Poverty in the United States, Laurence Lynn and Michael McGeary, eds. (Washington, DC: National Academy of Sciences, 1990).

Katz, Lawrence F., Jeffrey Kling, and Jeffrey Liebman, "Moving to Opportunity in Boston: Early Impacts of a Housing Mobility Program," Department of Economics, Princeton University, mimeo, 1999.

Laub, John H., "Ecological Considerations in Victim Reporting to the Police," Journal of Criminal Justice, IX(1981), 419-430.

Levitt, Steven D., "The Relationship Between Crime Reporting and Police: Implications for the Use of Uniform Crime Reports," Journal of Quantitative Criminology, XIV(1998), 61-81.

Ludwig, Jens, "Information and Inner City Educational Attainment," Economics of Education Review, XVIII(1999), 17-30.

- Ludwig, Jens, Greg J. Duncan, and Joshua C. Pinkston, "The Effects of Neighborhood Poverty on Labor Market Earnings: Evidence from a Randomized Housing-Mobility Experiment." Northwestern University / University of Chicago Joint Center for Poverty Research Working Paper No. 159, 1999.
- Ludwig, Jens, Greg J. Duncan, and Paul Hirschfield, "Urban Poverty and Juvenile Crime: Evidence from a Randomized Housing-Mobility Experiment." Northwestern University / University of Chicago Joint Center for Poverty Research Working Paper No. 158, 2000.
- Maguire, Kathleen and Ann L. Pastore, Bureau of Justice Statistics Sourcebook of Criminal Justice Statistics – 1996 (Washington, DC: Government Printing Office, 1997).
- Manski, Charles F., "Identification of Endogenous Social Effects: The Reflection Problem," Review of Economic Studies, LX(1993), 531-542.
- Maryland State Police, Crime in Maryland: 1996 Uniform Crime Report (Pikesville, MD: Maryland State Police, 1997).
- Matsueda, Ross L. and Kathleen Anderson, "The Dynamics of Delinquent Peers and Delinquent Behavior," Criminology, XXXVI(1998), 269-308.
- Miller, Ted R., Mark A. Cohen and Brian Wiersema, Victim Costs and Consequences: A New Look (Washington, DC: U.S. Department of Justice, National Institute of Justice, 1996).
- Moffitt, Robert A., "Policy Interventions, Low-Level Equilibria, and Social Interactions." Johns Hopkins University mimeo, 1998.
- Office of Juvenile Justice and Delinquency Prevention, Juvenile Court Statistics, 1993 (Washington, DC: U.S. Department of Justice, 1996).
- Office of Juvenile Justice and Delinquency Prevention, Promising Strategies to Reduce Gun Violence (Washington, DC: U.S. Department of Justice, 1999).
- Ogletree, Charles J., Mary Prosser, Abbe Smith, and William Talley, Beyond the Rodney King Story (Boston, MA: Northeastern University Press, 1995).
- Piehl, Anne Morrison, David M. Kennedy, and Anthony A. Braga, "Problem Solving and Youth Violence: An Evaluation of the Boston Gun Project," American Law and Economics Review (forthcoming).
- Plotnick, Robert D. and Saul D. Hoffman, "The Effect of Neighborhood Characteristics on Young

- Adult Outcomes: Alternative Estimates,” Social Science Quarterly, LXXX(1999), 1-18.
- Reiss, Albert J., “Co-Offending and Criminal Careers,” Crime and Justice: An Annual Review of Research, Michael Tonry and Norval Morris, eds. (Chicago, IL: University of Chicago Press, 1988).
- Sacerdote, Bruce, “Peer Effects with Random Assignment: Results for Dartmouth Roommates,” National Bureau of Economic Research Working Paper No. W7469, 2000.
- Sah, Raaj K., “Social Osmosis and Patterns of Crime,” Journal of Political Economy, IC(1991), 1272-1295.
- Sampson, Robert J., Stephen W. Raudenbusch, and Felton Earls, “Neighborhoods and Violent Crime: A Multilevel Study of Collective Efficacy,” Science, CCLXXVII(1997), 918-924.
- Schrag, Joel and Suzanne Scotchmer, “The Self-Reinforcing Nature of Crime,” International Review of Law and Economics, XVII(1997), 325-335.
- Skogan, Wesley G., Issues in the Measurement of Victimization (Washington, DC: U.S. Department of Justice, Bureau of Justice Statistics, 1981).
- Snyder, Howard N. and Melissa Sickmund, Juvenile Offenders and Victims: 1999 National Report (Washington, DC: U.S. Department of Justice, Office of Juvenile Justice and Delinquency Prevention, 1999).
- Wilson, William J., The Truly Disadvantaged. (Chicago, IL: University of Chicago Press, 1987).

TABLE I

Baseline Characteristics of Baltimore MTO Households

	<u>Total</u>	<u>Experimental</u>	<u>Comparison</u>	<u>Control</u>
<u>Household characteristics</u>				
Families (N)	638	252	188	198
African-American (%)	97.3	96.9	96.8	98.4
Female householder (%)	97.9	98.4	96.2*	99.0
Householder age	33.6	33.9	33.4	33.2
Number of children	2.72	2.67	2.98	2.55
Householder Married (%)	3.2	3.1	3.4	3.3
Householder has h.s. degree (%)	42.9	46.0*	45.8**	36.1
Householder has G.E.D. (%)	15.0	13.4	15.0	17.2
Householder working (%)	23.5	23.2	18.8*	28.5
Household income (\$'s)	6,776	7,081	6,415	6,749
AFDC at baseline (%)	81.3	80.3	83.5	80.4
AFDC ever (%)	97.4	97.7	96.5	97.9
Time in current nghbhd (yrs)	8.0	8.6	6.9	8.4
During last 6 months, someone in HH had been victim of crime	50.4	54.4*	49.9	45.7
Primary reasons for Enrolling in MTO:				
Better schools	12.9	11.5	16.4	11.7
To be near job	0.5	0	1.2	0.5
Better transportation	0	0	0	0
To get a job	1.0	1.6	0.3	1.1
Avoid gangs, drugs	53.6	53.9	50.7	55.8
Better apartment	26.4	26.8	27.5	25.0
Other	5.4	6.4	3.8	5.8
Second most important reason:				
Better schools	30.9	32.0	32.5	28.2

To be near job	0.7	0.3	1.2	0.5
Better transportation	0.3	0.3	0	0.5
To get a job	4.5	6.0	2.6	4.3
Avoid gangs, drugs	27.9	27.5	26.8	29.3
Better apartment	29.6	26.4	33.2	30.3
Other	6.2	7.5	3.7	6.9
Time between random assignment and 3/1/99 ^a (years)	3.7	3.7	3.7	3.7

NOTES TO TABLE I:

Authors' weighted calculations from MTO baseline survey data (see text). Baseline survey response rate for MTO families equals 100 percent. a. March 1, 1999 is the last date for which criminal offense information is available for MTO juveniles. ** = Difference with control group statistically significant at 5 percent. * = Difference with control group statistically significant at 10 percent.

TABLE II

**Descriptive Statistics for Baseline Control Variables
for Analytic Sample of MTO Teens Ages 11 to 16 at Random Assignment**

	<u>Total</u>	<u>Experimental</u>	<u>Section 8-only</u>	<u>Control</u>
Teens (N)	336	148	92	96
Male (%)	46.7	43.8	52.0	45.8
Age (%)				
11	19.1	19.7	15.7	21.9
12	21.5	21.4	23.4	19.8
13	21.7	19.7	22.7	24.0
14	19.5	22.0	19.4	15.6
15	18.1	17.3	18.8	18.8
Number of Arrests During Pre-Program Period:				
Violent crimes (% of teens):				
0	87.7	86.3	88.0	89.6
1	9.0	9.5	9.8	7.3
2	2.1	3.1	0.6	2.1
3 or more	1.2	1.0	1.6	1.0
Property crimes (% of teens):				
0	91.6	90.1	93.9	91.7
1	5.8	5.7	4.5	7.3
2	1.1	2.6**	0.0	0.0
3 or more	1.4	1.6	1.6	1.0
Other crimes (% of teens):				
0	90.5	85.7**	93.9	94.8
1	6.1	10.2**	2.8	3.1
2	2.1	3.7	0.6	1.0
3 or more	1.3	0.5	2.8	1.0
In the six months prior to randomization, percentage of households:				
that were broken into	27.7	33.6**	29.2	16.7
where someone had their purse or wallet stolen	24.3	22.7	31.2	19.8
where someone was threatened	30.8	35.1*	32.8	21.9

where someone was beaten	28.9	31.8	30.4	22.9
where someone was stabbed	9.7	9.2	6.7	13.5
# of children in household	3.5	3.5*	4.0**	2.9
Mother received AFDC (%)	78.5	71.0	87.4	81.3
Mother's age	40.3	40.6	40.7	39.4
Mother has high school diploma (%)	36.5	38.7	37.2	32.3
Mother has GED (%)	16.1	16.1	12.6	19.8
Mother works full time (%)	14.5	19.5	4.9**	16.7
Mother works part time (%)	14.7	17.9	10.0	14.6
Mother is married (%)	4.7	7.0	1.8	4.2
Time between random assignment & 3/1/99 ^a (years)	3.7	3.6	3.7	3.8

NOTES FOR TABLE II:

Calculations from MTO baseline survey data. Baseline survey response rate for MTO families equals 100 percent (see text). a. March 1, 1999 is the last date for which criminal offense information is available for MTO juveniles. ** = Difference with control group statistically significant at 5 percent. * = Difference with control group statistically significant at 10 percent.

TABLE III

Relocation Outcomes for MTO Families

	<u>Baseline (all families)</u> 1994-5	<u>Experimental</u>		<u>Section 8-only</u>		<u>Control</u>	
		Initial	As of 12/97	Initial	As of 12/97	Initial	As of 12/97
Distribution of MTO Households							
Jurisdiction :							
Baltimore City	100.0	77.1	79.4	89.9	86.7	99.5	98.0
Anne Arundel County	0.0	0.8	2.0	0.0	0.5	0.0	0.0
Baltimore County	0.0	13.0	10.7	5.3	8.0	0.0	1.0
Harford County	0.0	0.4	0.4	0.0	0.0	0.0	0.0
Howard County	0.0	7.1	5.9	2.7	2.7	0.0	0.5
Montgomery County	0.0	0.4	0.4	0.0	0.0	0.0	0.0
Other	0.0	1.2	1.2	2.1	2.1	0.5	0.5
<hr/>							
% Census Tract Poor:							
0 - 9.9	0.0	49.4	43.0	8.7	12.5	0.0	4.5
10 -19.9	0.0	4.8	8.4	14.7	21.2	0.0	7.6
20- 29.9	0.2	0.0	7.6	10.3	15.8	0.0	3.0
30- 39.9	0.3	0.4	4.0	12.5	13.0	0.0	6.6
40- 49.9	2.0	1.6	6.4	9.8	7.1	2.0	6.6
50-59.9	4.4	1.2	4.0	6.5	4.9	5.6	4.5
60-69.9	52.5	22.7	18.7	26.6	19.6	49.0	43.4
70-79.9	20.4	9.6	4.0	7.1	3.8	23.2	14.6
80 plus	20.1	10.4	4.0	3.8	2.2	20.2	9.1

NOTES TO TABLE III:

“Initial” post-program addresses reflect the initial moves made by experimental and Section 8-only families who relocate through MTO, and the baseline locations for remaining families. Neighborhood characteristics are calculated using 1990 Census data for all families assigned to each of the three MTO treatment groups (program-movers as well as nonmovers).

TABLE IV

**MTO Intent-to-Treat Effects on Post-Program Arrests
for Juveniles Ages 11-16 at Random Assignment**

	Control Group		Experimental vs Control		Section 8-only vs Control	
	Mean Arrests	Prev. Incid.	Prev.	Incid.	Prev.	Incid.
Full Sample (N=336)						
Unadjusted						
Violent crime	0.027	3.0	-0.008 (0.007)	-1.0 (0.8)	-0.012 (0.008)	-1.4 (0.8)*
Property crime	0.018	2.0	0.014 (0.007)**	1.6 (0.8)**	0.003 (0.008)	0.1 (0.8)
Other crime	0.028	3.3	0.001 (0.009)	-0.1 (1.1)	-0.004 (0.009)	-0.8 (1.0)
All crimes	0.068	8.3	0.006 (0.015)	0.6 (2.1)	-0.010 (0.017)	-2.1 (2.0)
Full Sample (N=336)						
Regression-Adjusted						
Violent crime	0.027	3.0	-0.013 (0.007)*	-1.6 (0.8)**	-0.012 (0.008)	-1.4 (0.8)*
Property crime	0.018	2.0	0.009 (0.006)	1.3 (0.8)	-0.003 (0.007)	-0.5 (0.8)
Other crime	0.028	3.3	-0.005 (0.008)	-0.7 (1.0)	-0.009 (0.008)	-1.3 (1.0)
All crimes	0.068	8.3	-0.009 (0.012)	-0.9 (1.8)	-0.022 (0.015)	-3.1 (1.8)*

NOTES FOR TABLE IV:

“Prevalence” refers to the proportion of teens who are arrested per quarter during the post-program period, while “incidence” refers to arrests per 100 teens per quarter. Treatment effects are calculated by applying a linear probability model to a quarterly panel dataset, controlling for the pre-program control variables shown in Table II. The intent-to-treat effects shown above are the coefficient estimates for variables indicating random assignment to the experimental or Section 8-only group. Huber-White robust standard errors (in parentheses) account for panel structure of data as well as the inclusion of multiple children from the same family in our sample. Analytic sample consists of the 336 MTO teens who are ages 11æx<16 at random assignment; quarters following each teen’s 18th birthday are excluded from the analysis. ** = Statistically significant at 5 percent. * = Statistically significant at 10 percent.

TABLE V

MTO Intent-to-Treat Effects on Post-Program Arrests for Juveniles Ages 11-16 at Random Assignment, Stratified by Pre-Program Arrests and Gender

	Control Group		Experimental vs Control		Section 8-only vs Control	
	Mean Arrests		Prev.	Incid.	Prev.	Incid.
Teens with No Pre-Program Arrests (N=256)						
Regression-Adjusted						
Violent crime	0.022	2.2	-0.010 (0.007)	-1.0 (0.7)	-0.014 (0.008)*	-1.4 (0.8)*
Property crime	0.011	1.2	0.008 (0.006)	0.9 (0.7)	-0.003 (0.006)	-0.4 (0.6)
Other crime	0.019	2.2	-0.003 (0.008)	-0.6 (0.9)	-0.004 (0.008)	-0.6 (0.9)
All crimes	0.047	5.6	-0.006 (0.011)	-0.7 (1.6)	-0.017 (0.013)	-2.5 (1.5)
All Males (N=162)						
Regression-Adjusted						
Violent crime	0.038	4.3	-0.021 (0.012)*	-2.9 (1.4)**	-0.013 (0.010)	-1.9 (1.2)
Property crime	0.029	3.3	0.014 (0.013)	2.7 (1.7)	-0.007 (0.010)	-0.5 (1.2)
Other crime	0.048	5.9	-0.011 (0.020)	-1.9 (2.5)	-0.022 (0.017)	-3.1 (2.0)
All crimes	0.105	13.6	-0.024 (0.025)	-2.1 (4.0)	-0.044 (0.025)*	-5.5 (3.2)*
All Females (N=174)						
Regression-Adjusted						
Violent crime	0.018	1.8	-0.007 (0.007)	-0.7 (0.7)	-0.004 (0.009)	-0.4 (0.9)
Property crime	0.009	0.9	0.010 (0.006)	1.0 (0.6)	0.016 (0.011)	1.6 (1.1)
Other crime	0.012	1.2	-0.005 (0.005)	-0.5 (0.5)	0.004 (0.006)	0.4 (0.6)
All crimes	0.037	3.9	0.001 (0.012)	-0.2 (1.3)	0.018 (0.018)	1.6 (1.8)

NOTES FOR TABLE V:

“Prevalence” refers to the proportion of teens who are arrested per quarter during the post-program period, while “incidence” refers to arrests per 100 teens per quarter. Treatment effects are calculated by applying a linear probability model to a quarterly panel dataset, controlling for the pre-program control variables shown in Table II. The intent-to-treat effects shown above are the coefficient estimates for variables indicating random assignment to the experimental or Section 8-only group. Huber-White robust standard errors (in parentheses) account for panel structure of data as well as the inclusion of multiple children from the same family in our sample. Analytic sample consists of the 336 MTO teens who are ages 11æx<16 at random assignment; quarters following each teen’s 18th birthday are excluded from the analysis. ** = Statistically significant at 5 percent. * = Statistically significant at 10 percent.

TABLE VI

Effects of Treatment-on-the-Treated for MTO Juveniles Ages 11-16 at Random Assignment

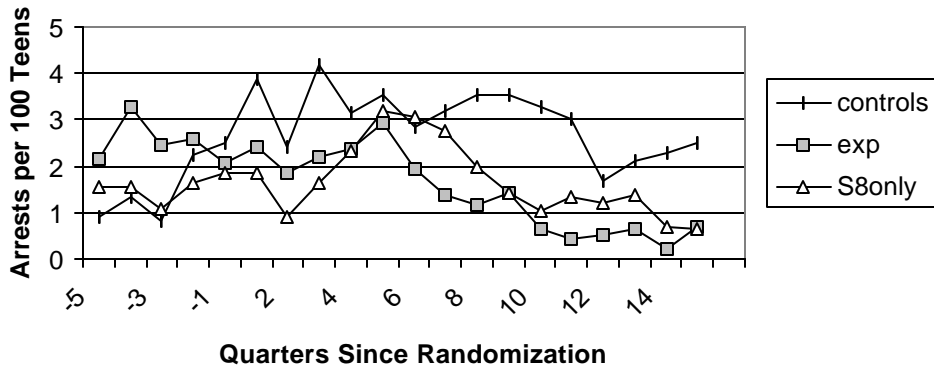
<u>EXPERIMENTAL TREATMENT</u>				
Experimental families: status in post-program Move through MTO 1.		Relocation Not move through MTO (2)	Imputed arrest rate for controls who would have moved if assigned to exp. group (3)	Effects of treatment on the treated (1) – (3)
Post-Program				
Prevalence				
Violent crime	0.024	0.015	0.050	-0.026 (0.014)*
Property crime	0.034	0.030	0.022	0.012 (0.013)
Other crime	0.031	0.028	0.039	-0.008 (0.016)
All crimes	0.081	0.067	0.103	-0.022 (0.023)
Incidence				
Violent crime	2.5	1.6	5.7	-3.2 (1.5)**
Property crime	3.8	3.5	1.5	2.3 (1.7)
Other crime	3.2	3.3	4.3	-1.1 (2.1)
All crimes	9.5	8.4	11.4	-1.9 (3.5)
 <u>SECTION 8-ONLY TREATMENT</u>				
Section 8-only families: status in post-program period – Move through MTO 2.		Relocation Not move through MTO (2)	Imputed arrest rate for controls who would have moved if assigned to S8 group (3)	Effects of treatment on the treated (1) – (3)
Post-Program				
Prevalence				
Violent crime	0.019	0.007	0.039	-0.020 (0.011)*
Property crime	0.026+	0.008	0.027	-0.001 (0.009)
Other crime	0.018	0.041	0.039	-0.021 (0.011)*
All crimes	0.061	0.052	0.096	-0.035 (0.021)*

Incidence				
Violent crime	1.9	0.7	4.3	-2.4 (1.2)**
Property crime	2.6+	0.8	3.0	-0.4 (1.0)
Other crime	1.8	4.4	4.5	-2.7 (1.3)**
All crimes	6.3	5.9	11.8	-5.5 (2.5)**

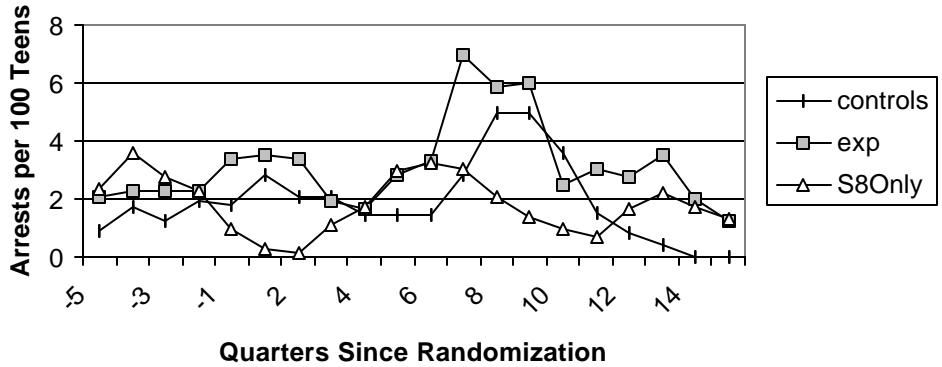
NOTES FOR TABLE VI:

“Prevalence” refers to the proportion of teens who are arrested per quarter during the post-program period, while “incidence” refers to arrests per 100 teens per quarter. Treatment effects are calculated by applying 2SLS to equation (4) in text, using each family’s MTO treatment-group assignment as an instrument for the family’s MTO relocation outcome. The 2SLS equations also control for the pre-program control variables shown in Table II. Huber-White robust standard errors (in parentheses) account for panel structure of data as well as the inclusion of multiple children from the same family in our sample. Analytic sample consists of the 336 MTO teens who are ages 11æx<16 at random assignment; quarters following each teen’s 18th birthday are excluded from the analysis. ** = Statistically significant at 5 percent. * = Statistically significant at 10 percent. ++ = Difference between MTO program-movers and non-movers is statistically significant at 5 percent. + = Difference between program-movers and non-movers is statistically significant at 10 percent.

**Figure II:
Regression-Adjusted Violent-Crime Arrest Rates**



**Figure III:
Regression-Adjusted Property-Crime Arrest Rates**



**Figure IV:
Regression-Adjusted Other-Crime Arrest Rates**

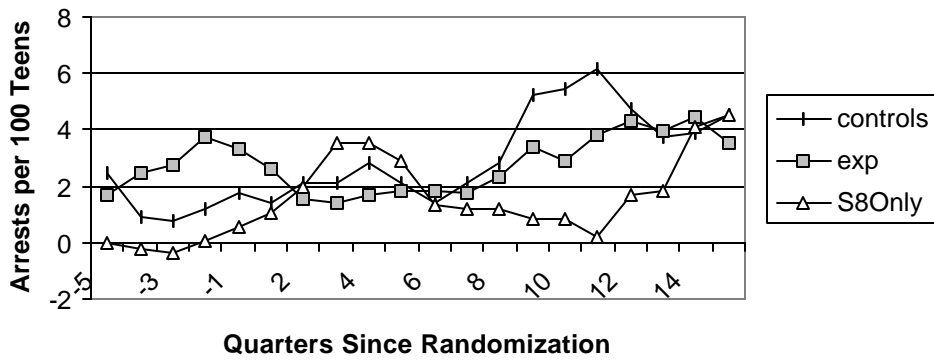


Figure 2: Intent-to-Treat Effects on Quarterly Violent-Crime Arrests

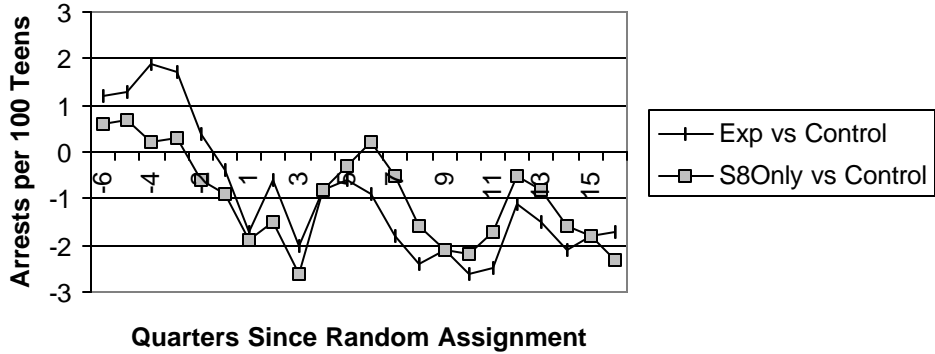


Figure 3: Intent-to-Treat Effects on Quarterly Property-Crime Arrests

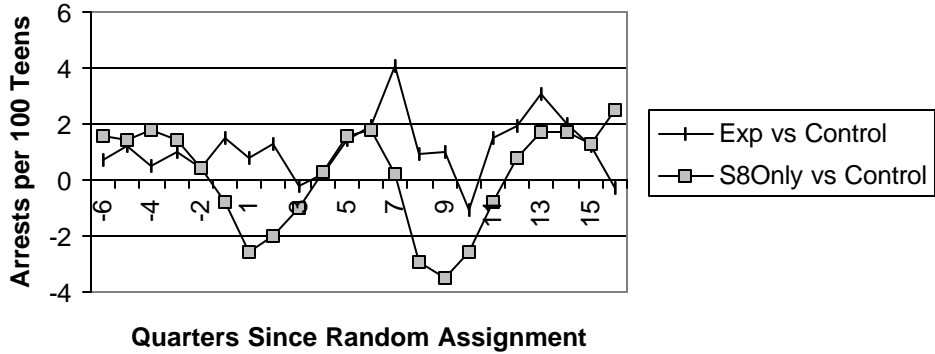
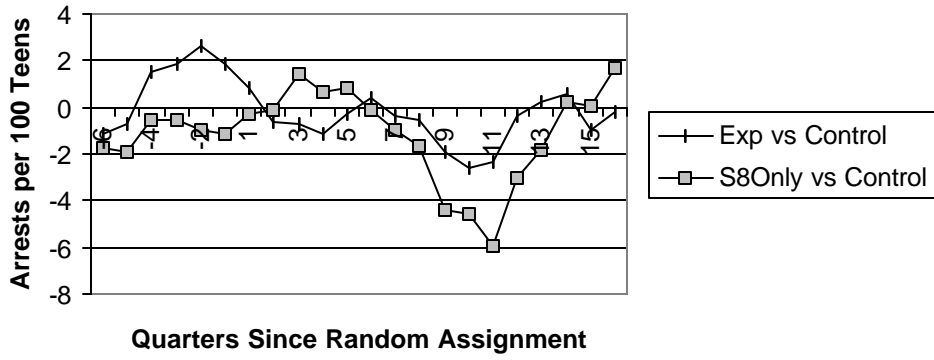


Figure 4: Intent-to-Treat Effects on Quarterly Other-Crime Arrests



NOTES

1. Other studies that address the selection problem using fixed-effects or instrumental-variables methods focus on other outcomes such as teen pregnancy or high school dropout, with mixed results [Evans, Oates and Schwab 1992; Aaronson 1997; Plotnick and Hoffman 1999]. Sacerdote [2000] exploits variation in peer groups generated by the random assignment of freshman roommates at Dartmouth and finds evidence of peer effects on academic effort, GPA, and fraternity membership.
2. See, for example, Donahue and Siegelman [1998] for a discussion. The most serious concern is that misreporting may vary across MTO treatment groups, since previous research in criminology finds that misreporting patterns are correlated with individual-level socio-demographic characteristics (and thus perhaps with neighborhood characteristics as well) [Hindelang, Hirschi and Weis 1981].
3. These are FBI Uniform Crime Index offense rates, an index which consists of criminal homicide, forcible rape, robbery, assault, breaking or entering, larceny-theft, motor vehicle theft, and arson [Maryland State Police 1997]. Our calculations are likely to understate the actual crime rate in the MTO baseline neighborhoods because we only have crime information at the police district level in Baltimore City, and MTO families presumably live within the higher-crime parts of these districts.
4. The TOT estimate also assumes that the proportion of families who would comply with each treatment is equivalent across treatment groups, which should be met because of random assignment, and that none of the families in the control group receive either the experimental or Section 8-only treatments. This second assumption is met under our definition of the experimental and Section 8-only treatments as “relocation to Section 8-subsidized private-market housing through the MTO program.” Control families who relocate on their own into private-market housing are different from those who receive the Section 8-only and experimental treatments because their private-market housing is not subsidized. Some control families may have received something close to the Section 8-only group’s treatment through HUD’s Hope VI program, which funded the demolition of two of the baseline public housing buildings, although the timing of the Hope VI and MTO moves were different. Moreover, none of control families moved through Hope VI received the additional life-skills counseling and search assistance or the relocation restrictions imposed on experimental-treatment families.
5. The standard economic model of crime suggests that the material gains from crime (“loot”) will affect the probability of property offending [Ehrlich 1973]. The possibility of more valuable loot in low-poverty areas should be less of an issue for violent offending, since robbery is the only violent crime that is motivated by material gain and accounts for only 16 percent of juvenile violent-crime arrests in 1995 [Maguire and Pastore 1997]. Consistent with our prediction that neighborhood affluence may contribute to increases in property offending, previous research suggests that high-poverty public-housing complexes typically have higher rates of violent and drug crimes than surrounding areas, but less property crime [Dunworth and Saiger 1994; Dumanovsky, Fagan and Thompson 1999].
6. We estimate clearance rates for FBI “index crimes” using data at the police-district level for the addresses of MTO families as of December, 1997. Index crimes include those that fall into our violent-crime category (aggravated assault, robbery and rape, but not simple assaults) as well as our property-crime category (larceny, burglary / breaking and entering, and motor vehicle theft). Estimated clearance rates in the post-program neighborhoods equal 22.0, 22.9 and 23.8 percent for the experimental, Section 8-only and control groups, respectively. Unfortunately we cannot calculate separate clearance rates for violent versus property crimes at the police-district level.

7. Other research on victim reporting from the National Crime Victimization Survey (NCVS) find that victim reporting rates are lower for teens than for adults, lower among high school dropouts than those with a high school degree or more, slightly lower for whites than nonwhites [Biderman and Lynch 1991; Levitt 1998], and bears no relationship to household income (unpublished tabulations provided to us by James Lynch). The net effects on differences in victim reporting in post-program neighborhoods across MTO treatment groups are likely to be modest, since for the experimental and Section 8-only groups the effects on reporting from moving to areas with older and more educated residents is partially or wholly offset by the fact that more of these residents are white. The effects of differences in gang activity across neighborhoods on crime reporting are ambiguous [Akerlof and Yellen 1994]. It is possible that victim reporting could have increased in Baltimore City if police initiated an intensive policing effort such as the Boston Gun Project [Piehl, Kennedy and Braga forthcoming]. While Baltimore did initiate a program to mobilize communities against gun violence and drugs starting in 1995 [OJJDP 1999], our conversations with John Tewey, formerly of the Baltimore City police department's Violent Crime Task Force, suggest that on the whole no systematic changes in police practices were undertaken in Baltimore during our study period.

8. We define "convictions" in two different ways with the DJJ data. Our narrow definition includes only those cases that are adjudicated and result in a juvenile court ruling of delinquency (around 20 percent of all arrests to the MTO population), while the more expansive definition also includes cases that are disposed of informally and result in probation or service referral (35 percent of arrests). The results are qualitatively similar using either definition, and many of the violent-arrest effects remain statistically significant at the 10 percent level. Consistent with our prediction that discriminatory police behavior in low-poverty areas will show up as arrests within our other-crime category, the experimental treatment has a larger negative effect on convictions than arrests for crimes in our "other" category discussed below (results available upon request).

9. These addresses come from passive tracking sources such as administrative records from the Baltimore-area housing agencies that administer the Section 8 subsidies to the experimental and Section 8-only groups, change-of-address registries, and credit bureaus, as well as from the results of a brief follow-up survey of MTO families. Surveys were conducted on the phone for as many families as possible; those who could not be reached by telephone were interviewed in person. The response rate to Abt's survey was 91 percent. The survey asked household heads about the current composition of the household, and about the new addresses of individuals who were listed as members of the household on the baseline survey but were no longer living in the home at the time of the follow-up survey. The survey data suggest that around 10 percent of children under 18 were living apart from the householder as of July, 1998, a proportion that is surprisingly similar across MTO treatment groups. (Personal communication with Judie Feins and Debi Magri McInnis, Abt Associates).

10. In principle, a population of DJJ referrals will differ from a population of juvenile arrests because some juveniles may be referred directly to the DJJ without having been arrested, and some juveniles may be arrested and referred directly to the adult justice system. Both events are rare in Maryland. For example, 95 percent of the referrals in our MTO data involved an arrest. In Maryland as a whole in 1996, only 5 percent of arrested juveniles were automatically charged as adults (personal communication with Denise Scherer, Maryland State Police.) As a result, for convenience we refer to DJJ referrals as "juvenile arrests."

11. The DJJ conducted two matches for this project, once during February, 1998 (for an earlier version of this paper) and again during March 1999. Of the 240 MTO teens arrested prior to

February, 1998, 11 were identified in the first matching attempt but not the second, and 10 were identified in the second matching attempt but not the first. Presumably there are some teens who have DJJ criminal records but were not identified by either match because they give a false name or date of birth to the police upon arrest, their names are grossly misspelled in one of the datasets, or some other reason. We believe this group is likely to be small based on our comparisons of arrest rates for MTO males and those found with similar samples (see below).

12. We find that 81 percent of the MTO males born from 1977 to 1981 (who thus had turned 18 by the end of our arrest dataset's observation period) had been arrested at least once. By way of comparison, previous studies have found that between 42 and 64 percent of black males in other urban samples have been arrested by age 18 [Blumstein *et al.* 1986]. The samples examined in previous studies are likely to be more advantaged than the MTO population and come from earlier cohorts of juveniles.

13. In cases where teens were charged with multiple offenses per incident, we define the arrest charge as the most serious offense for which the teen has been charged.

14. The number of families differs across the three treatment groups because the Abt randomization algorithm attached a higher probability of assignment to the experimental group. In the Baltimore MTO site, the weighting proportions for the experimental, Section 8-only and control groups changed on February 1, 1996 from 8:3:5 to 3:8:5. This change could in principle affect our results if average criminality is different across MTO cohorts. To address this possibility, we weight all of our estimates so that the weighted proportion of families from each cohort is equal across MTO treatment groups.

15. While these victimization rates may be somewhat overstated because of "telescoping" and other reporting errors [Skogan 1981], they are nonetheless higher than the six-month victimization rate of six percent estimated for New York City public housing residents [Goering, Carnevale and Teodoro 1996].

16. Multivariate analysis of variance (MANOVA) cannot reject the null hypothesis that the vectors of means presented in Table 1 are equal across the three MTO treatment groups, with a probability value of 0.70. (The variable measuring time between the date of random assignment and March, 1999 is not included in this analysis, since this variable will be systematically different across families by virtue of the change in the randomization algorithm).

17. Of the Section 8-only non-compliers, almost all formally requested a Section 8-subsidy but could not sign a lease before the subsidy offer expired. In contrast, only half of the experimental group non-compliers ran up against the Section 8 subsidy time limit. One-quarter of the experimental non-compliers did not successfully complete the mandatory CAN counseling program, and the remaining non-compliers never contacted CAN after being assigned to the experimental group.

18. While families had around 180 days from the time they were issued their Section 8 vouchers and certificates to relocate, the actual time between random assignment and MTO relocation may be greater than 180 days because of lags between randomization and the issuance of the rental subsidies. For the experimental-group relocators, one-quarter move within one-half year of random assignment, half move within nine months, three quarters have moved within one year, and all of the families have moved within two years. For the Section 8-only group relocators, half moved within four months of random assignment, three-quarters had moved within six months, and all of the families had moved within the first year.

19. The regression-adjusted arrest rates for the pre-randomization period in Figures II through IV do not control for the pre-program arrest dummies shown in Table II. We evaluate each treatment group's predicted arrest rate at the mean value of the control group covariates. The figures present three-quarter moving averages for quarterly arrest rates.

20. The estimated control-complier means are generally similar for the control families who would have complied with the experimental treatment compared with those who would have complied with the Section 8-only treatment. The observed differences in Table VI are presumably due in part to sampling variability, and may also be due to differences in the set of families who choose to take-up the different treatments, as well as whatever differences exist across neighborhoods in the probability that a criminal act results in an arrest (a problem that may be of particular concern for the less-serious property and "other" crimes because of differences in victim reporting of such crimes to the police).

21. Note that these results do *not* imply that MTO relocation increases arrest rates, even though the arrest rates are higher for experimental and Section 8-only compliers (Table VI) than for the control group as a whole (Table IV). The reason is that compliers are a self-selected subgroup of MTO families; as a result, their average outcomes can only be compared to the potential compliers within the control group (as is done with the TOT estimates), and not to all control teens.

22. We find that the number of pre-program arrests for other crimes has a positive and statistically significant correlation with the probability of making an MTO move for families assigned to the experimental group, while pre-program property-crime arrests has a positive and statistically significant correlation with the probability of an MTO move by families in the Section 8-only group. We also find that pre-program violent-crime arrests have a stronger effect on the probability of MTO moves for experimental than Section 8-only families, consistent with the findings in Table VI that the post-program CCM for violent crime is higher for the experimental than Section 8-only treatment.

23. The "incapacitation" argument seems somewhat unlikely given that only around 10 percent of arrests result in a sentence to some type of formal detention setting; the mean, median and maximum sentence length equal 90, 70 and 333 days, respectively.

24. More detailed analysis of the location of these arrests is not possible because of the small number of arrests to suburban teens, and because Baltimore City police reporting districts are fairly large geographic areas.

25. This test is imperfect because the lack of a difference in TOT effects is consistent with either a generic moving effect, or non-linearities in the effects of specific neighborhood characteristics on teen behavior. Moreover, a difference in TOT effects could be due to differences in the composition of the complier populations across the two treatments, rather than to a dose-response effect.