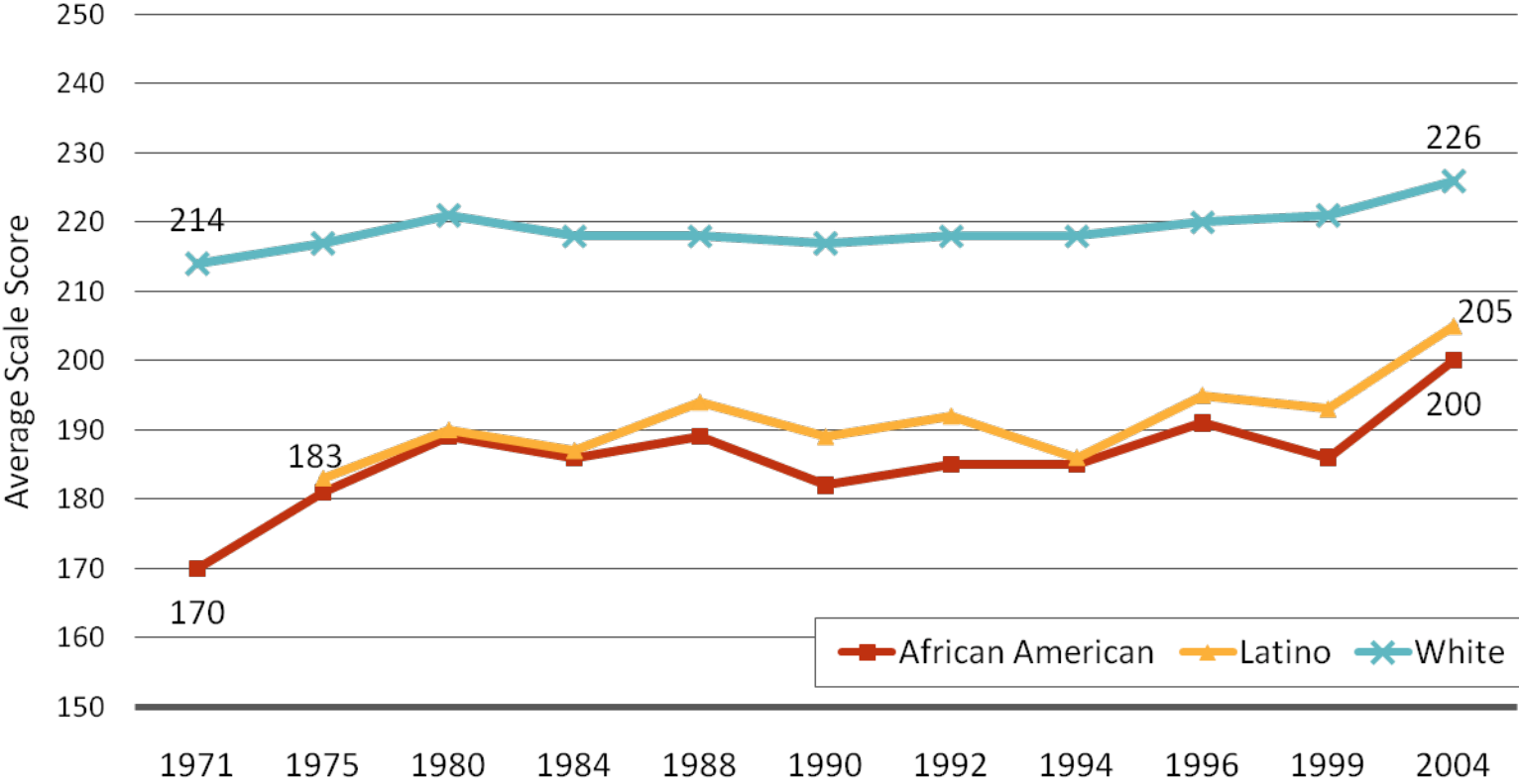


*Forty Years to Get Here: Changing
Discourse on Urban Schools, 1968-
2009*

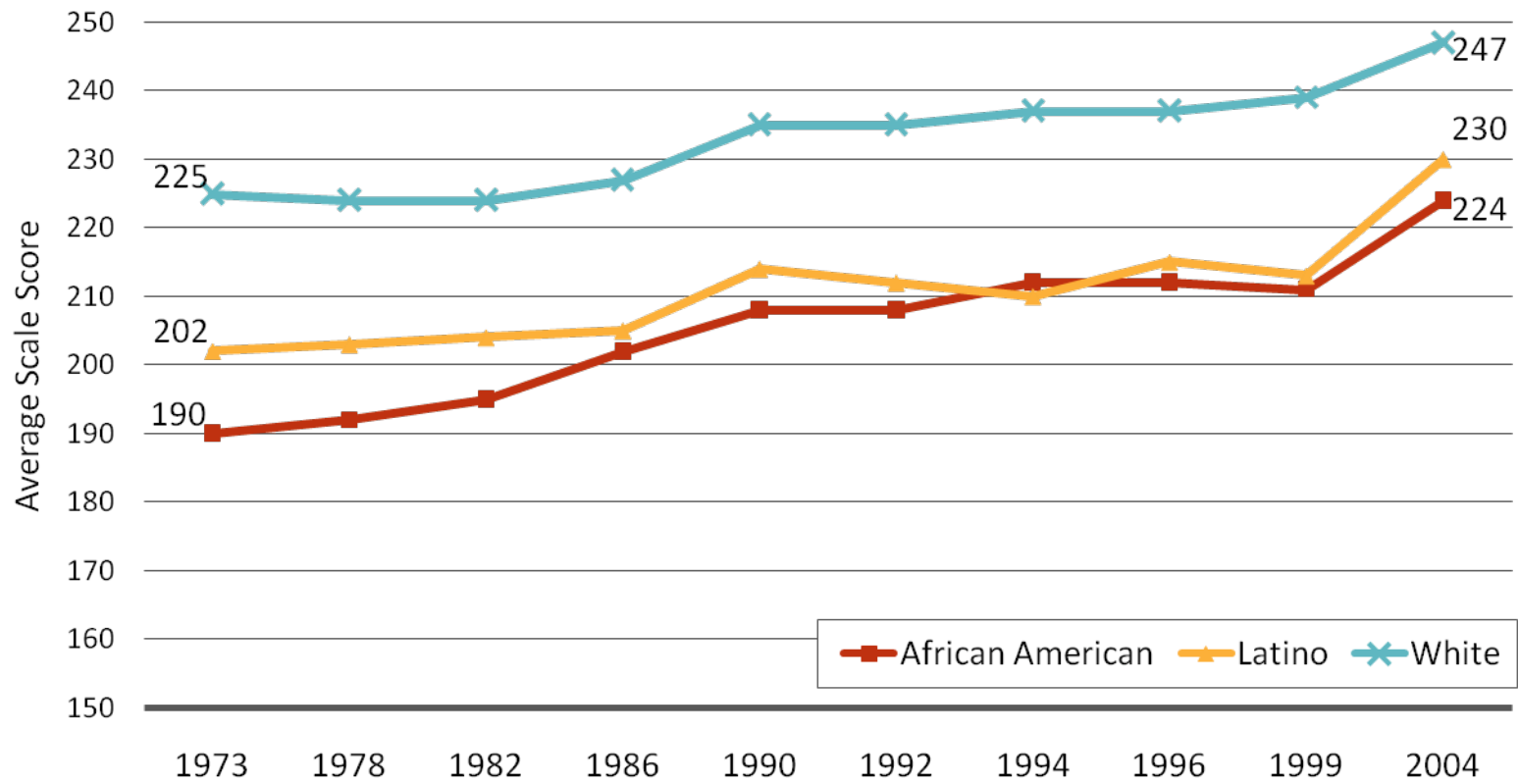
Charles Payne

University of Chicago

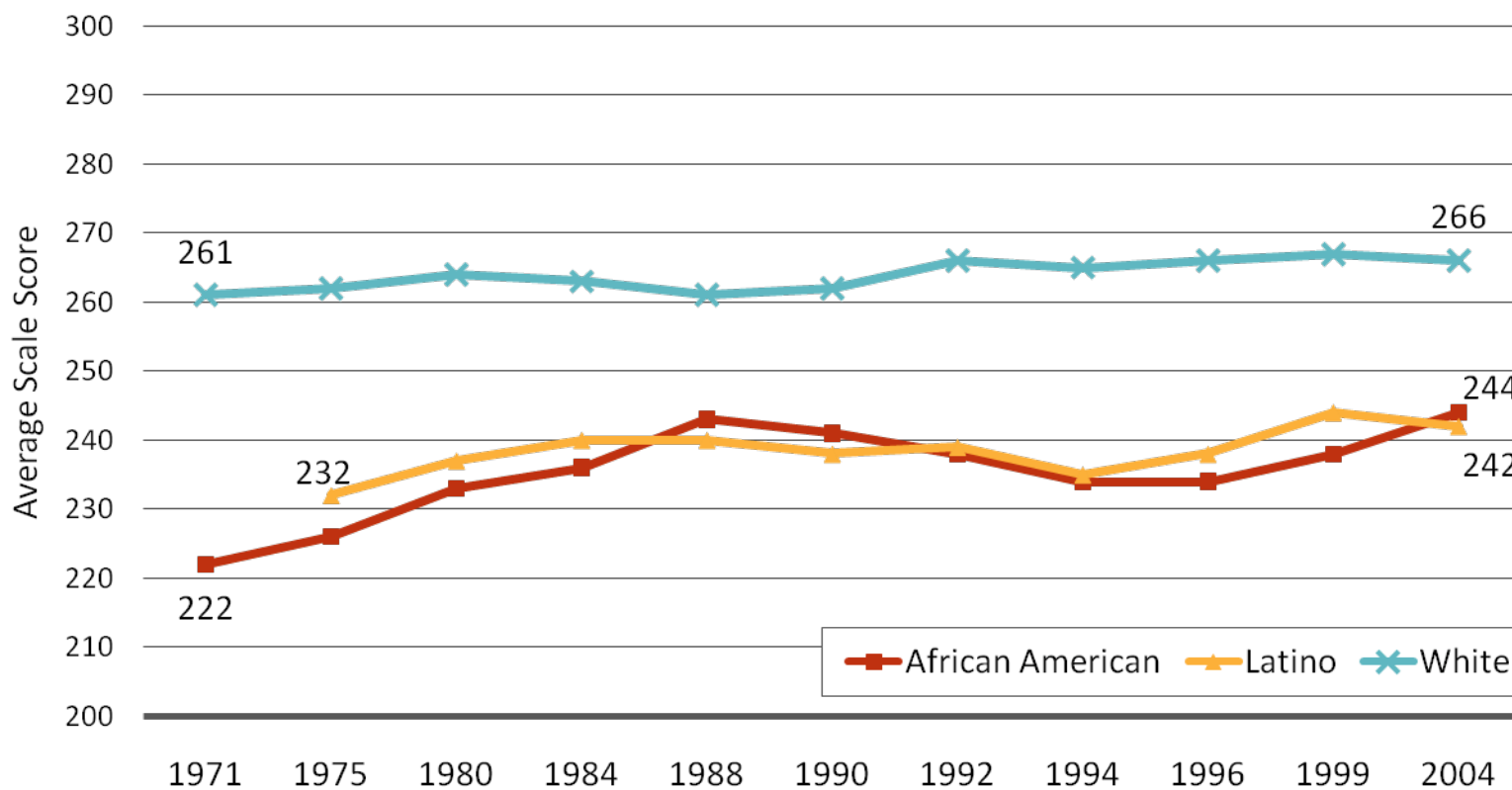
9 Year Olds – NAEP Reading



9 Year Olds – NAEP Math

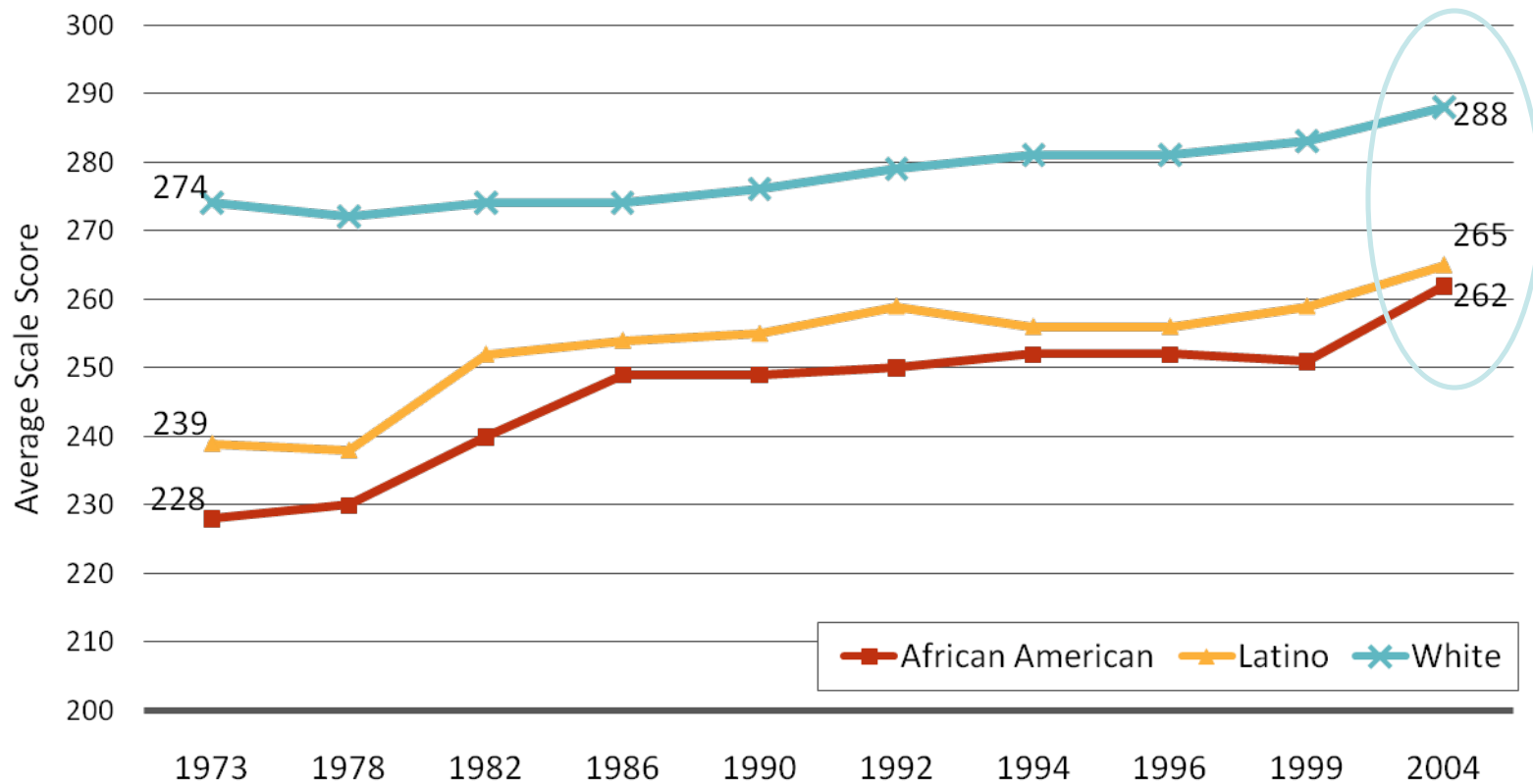


13 Year Olds – NAEP Reading



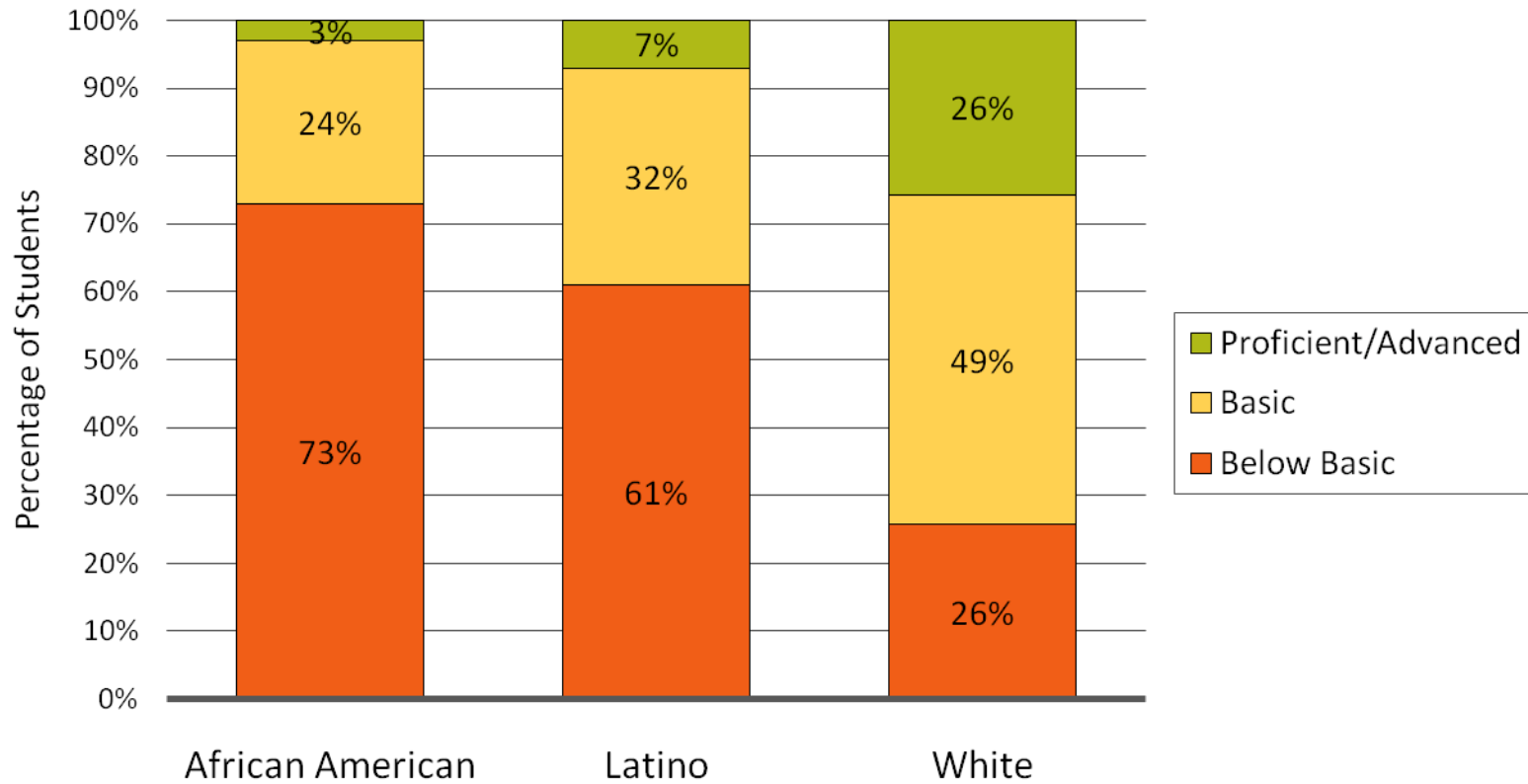
Increases and Record Performance for All Groups

13 Year Olds – NAEP Math



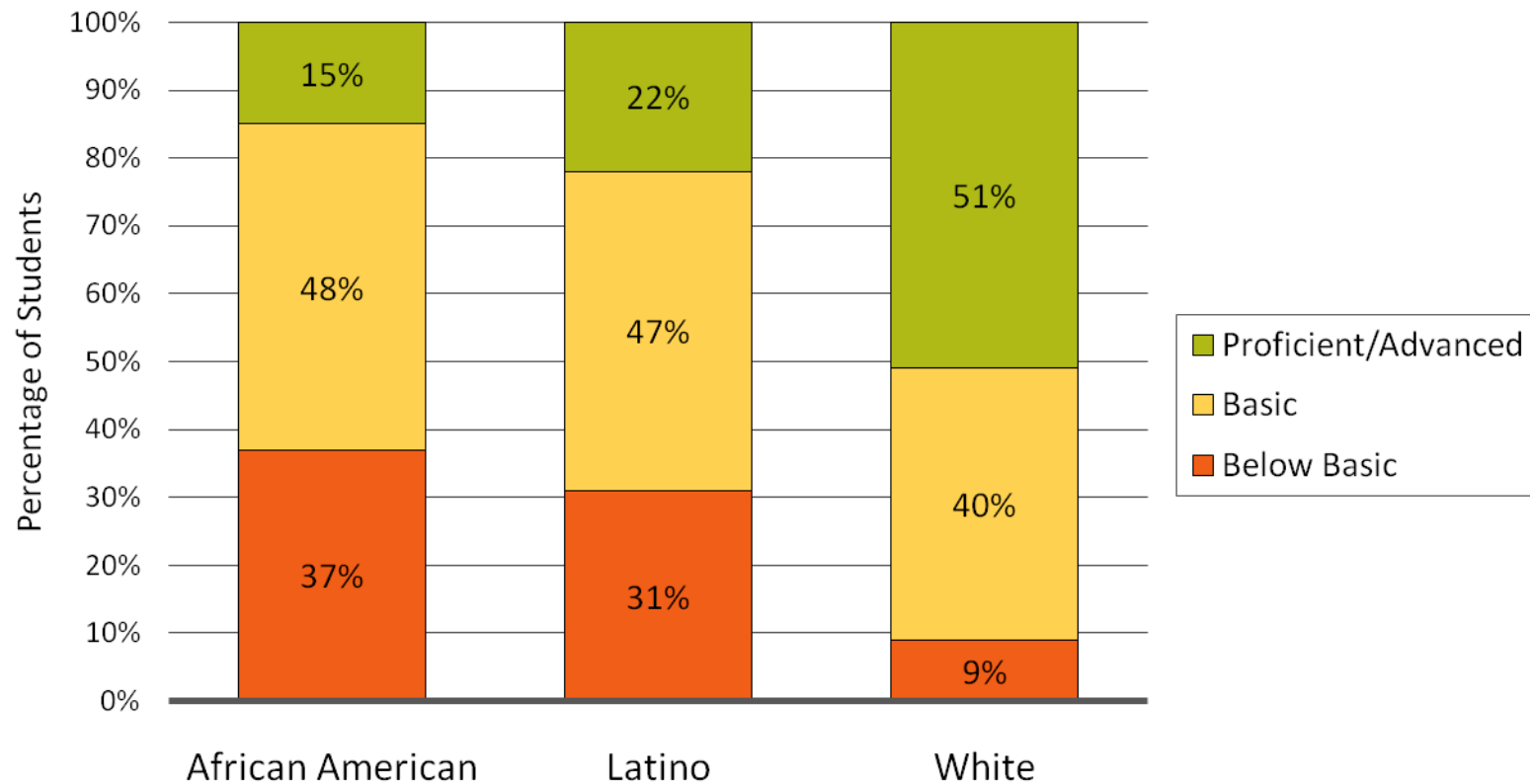
1996 NAEP Grade 4 Math

By Race/Ethnicity – Nation



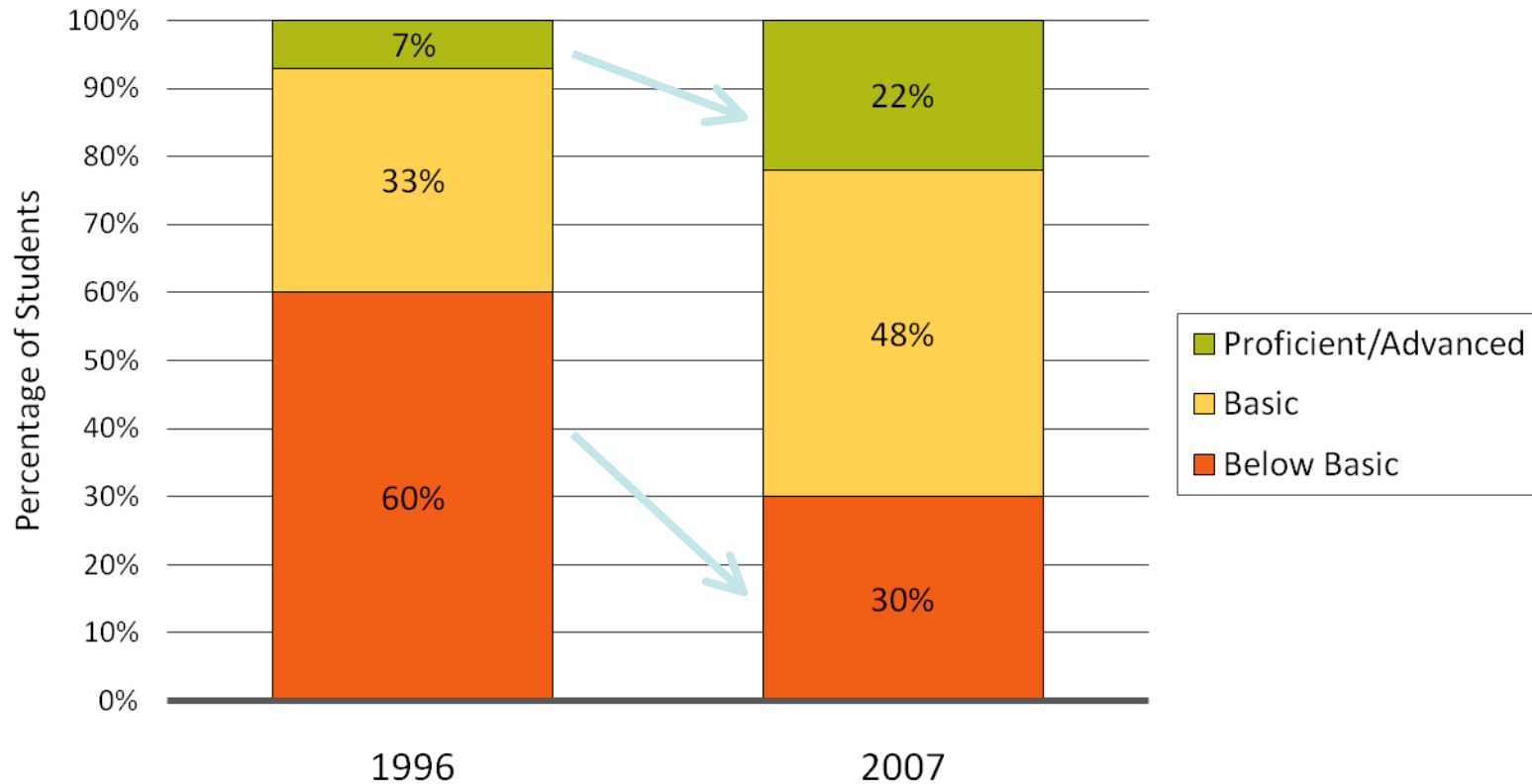
2007 NAEP Grade 4 Math

By Race/Ethnicity – Nation



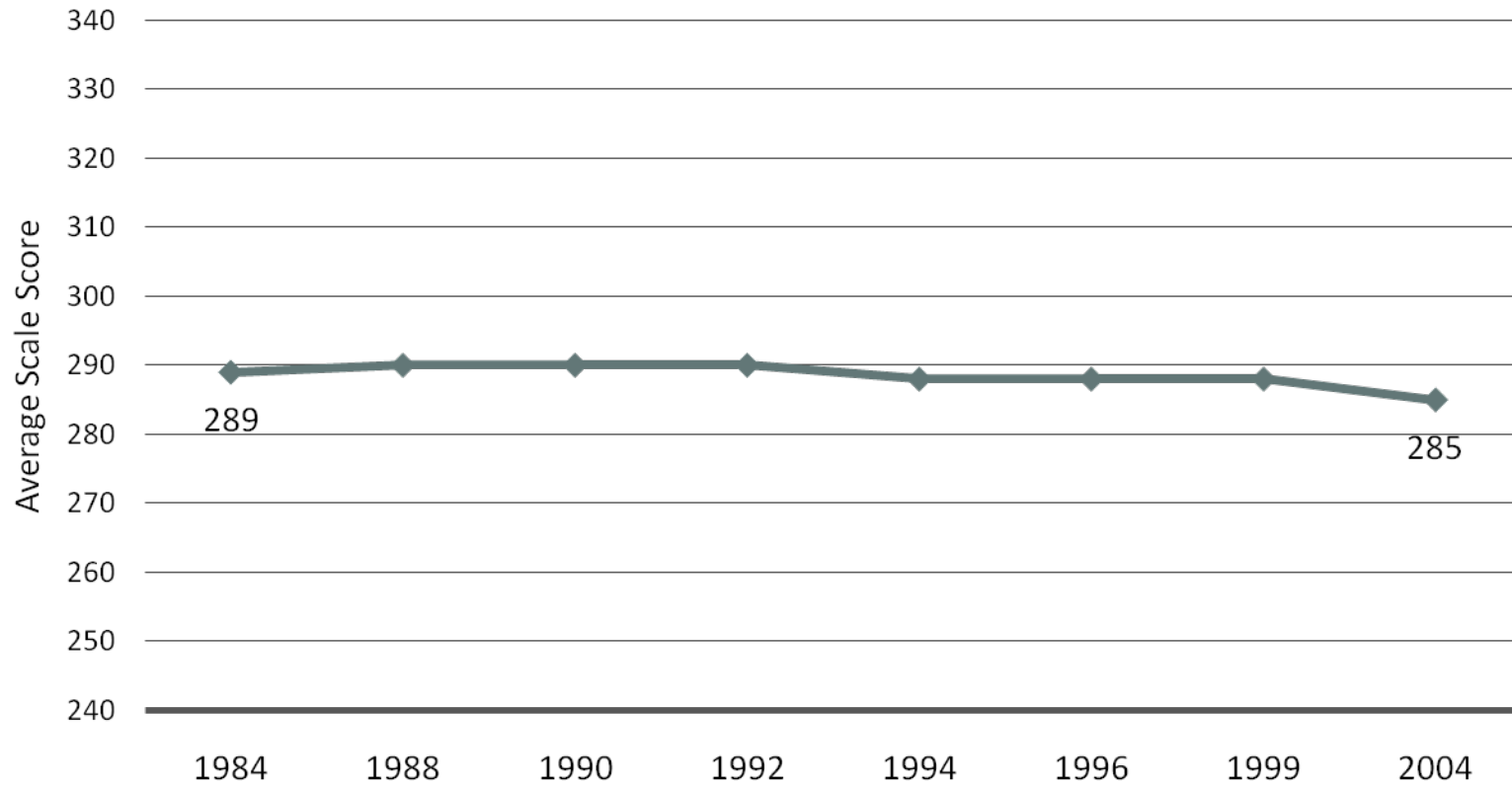
NAEP Grade 4 Math 1996 Compared to 2007

Low-Income Students – Nation



Achievement Flat in Reading

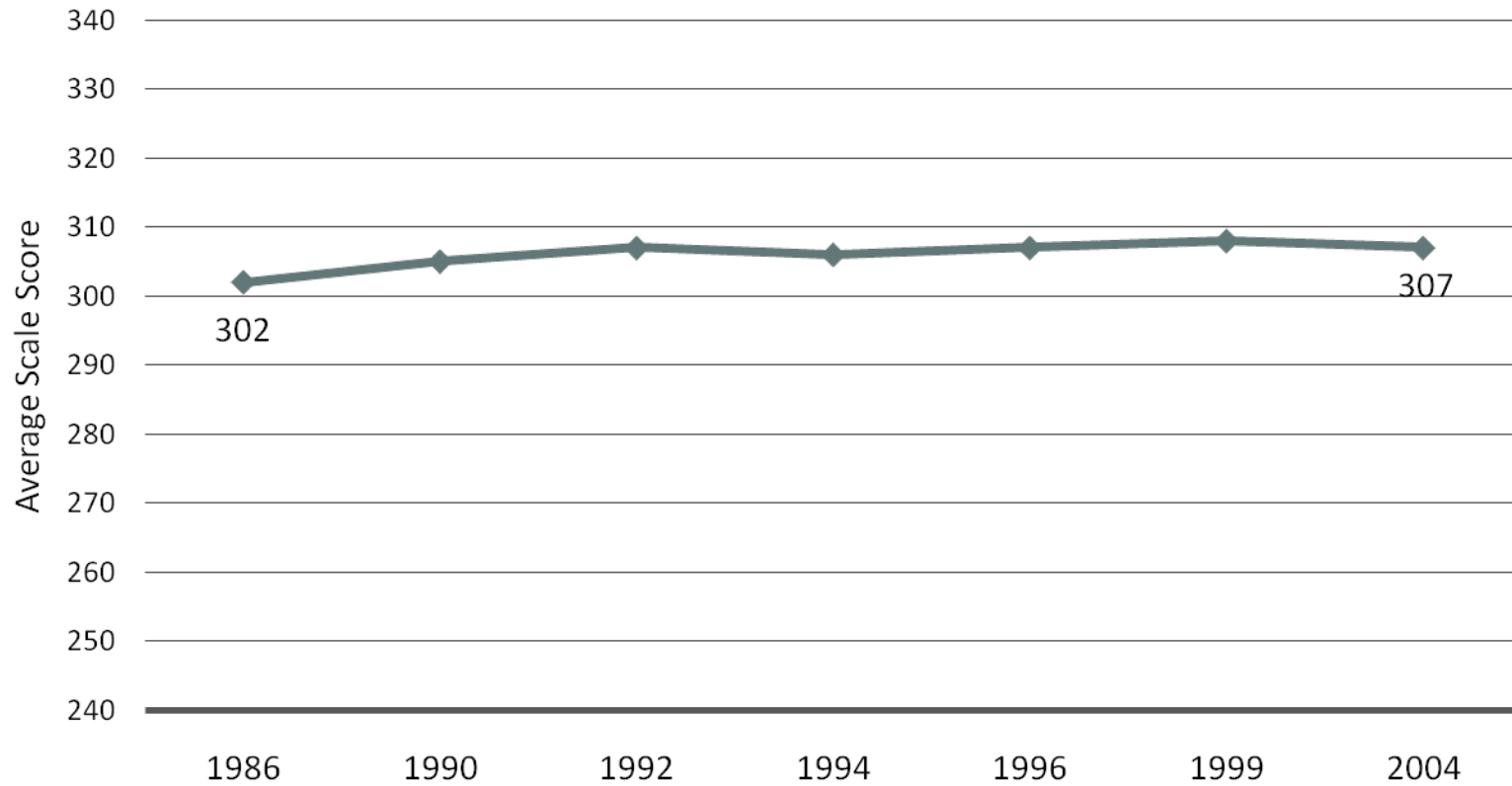
17 Year Olds Overall - NAEP



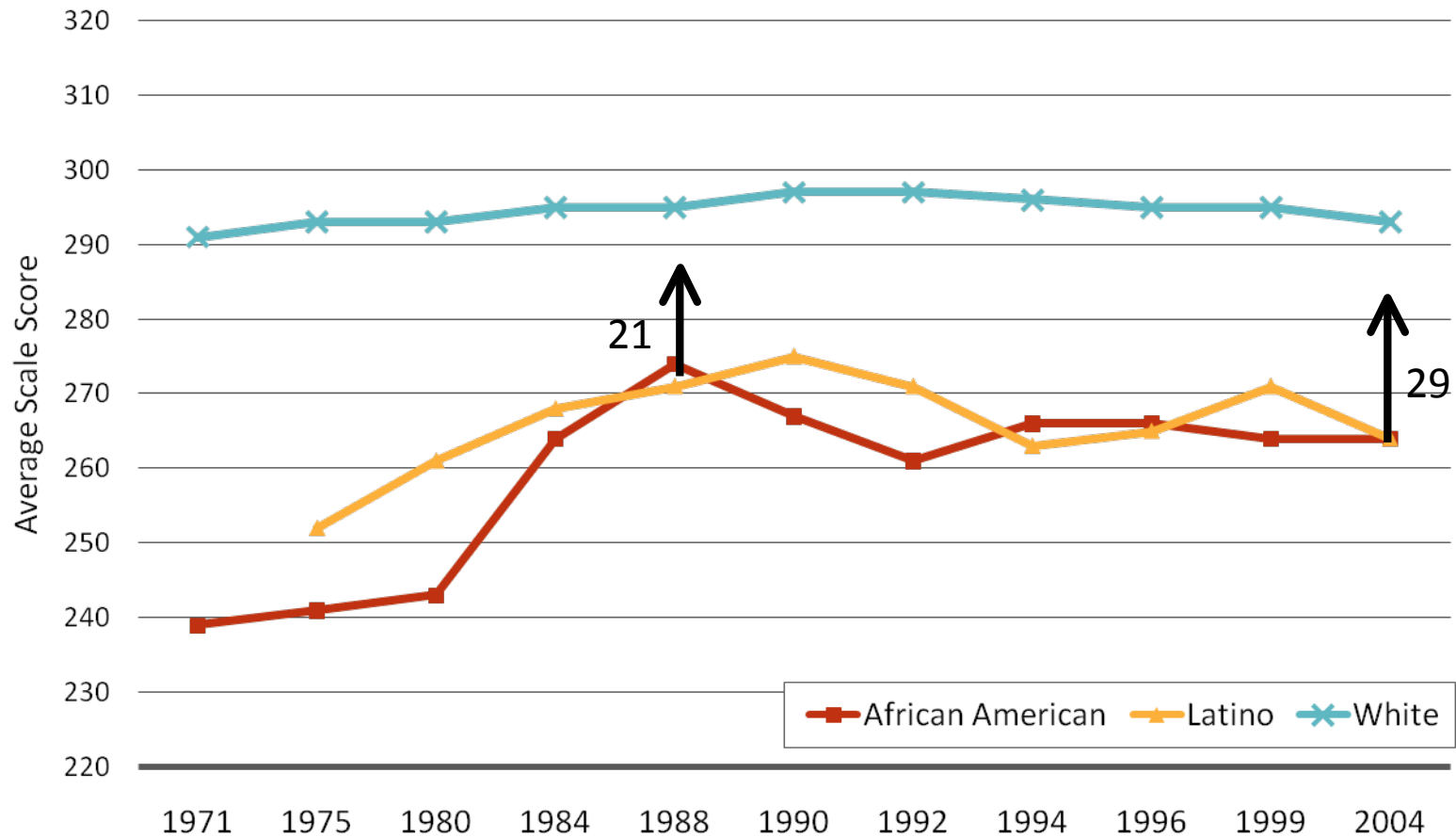
NAEP Long-Term Trends, NCES (2004)

Achievement Also Flat in Math

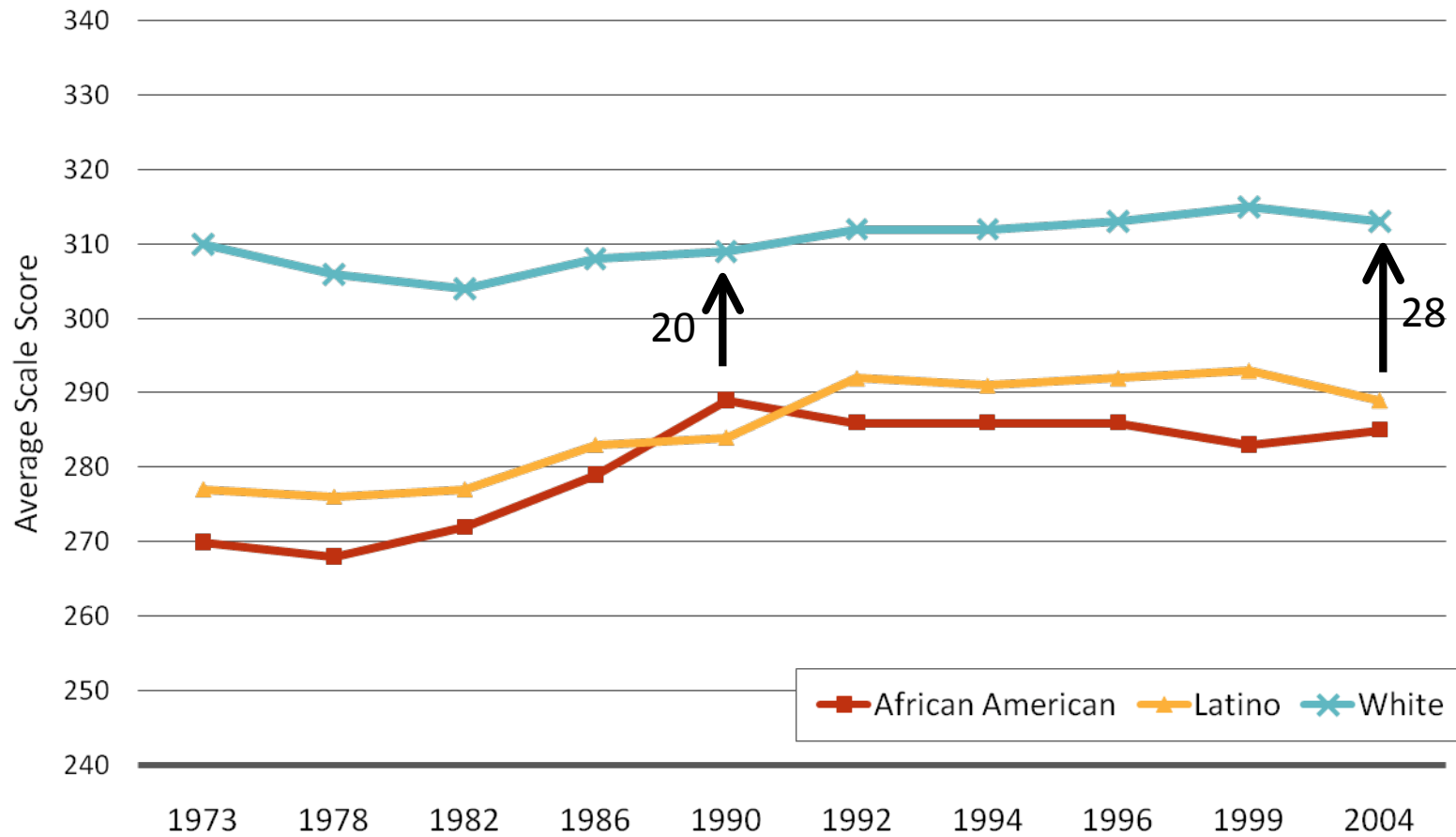
17 Year Olds Overall - NAEP



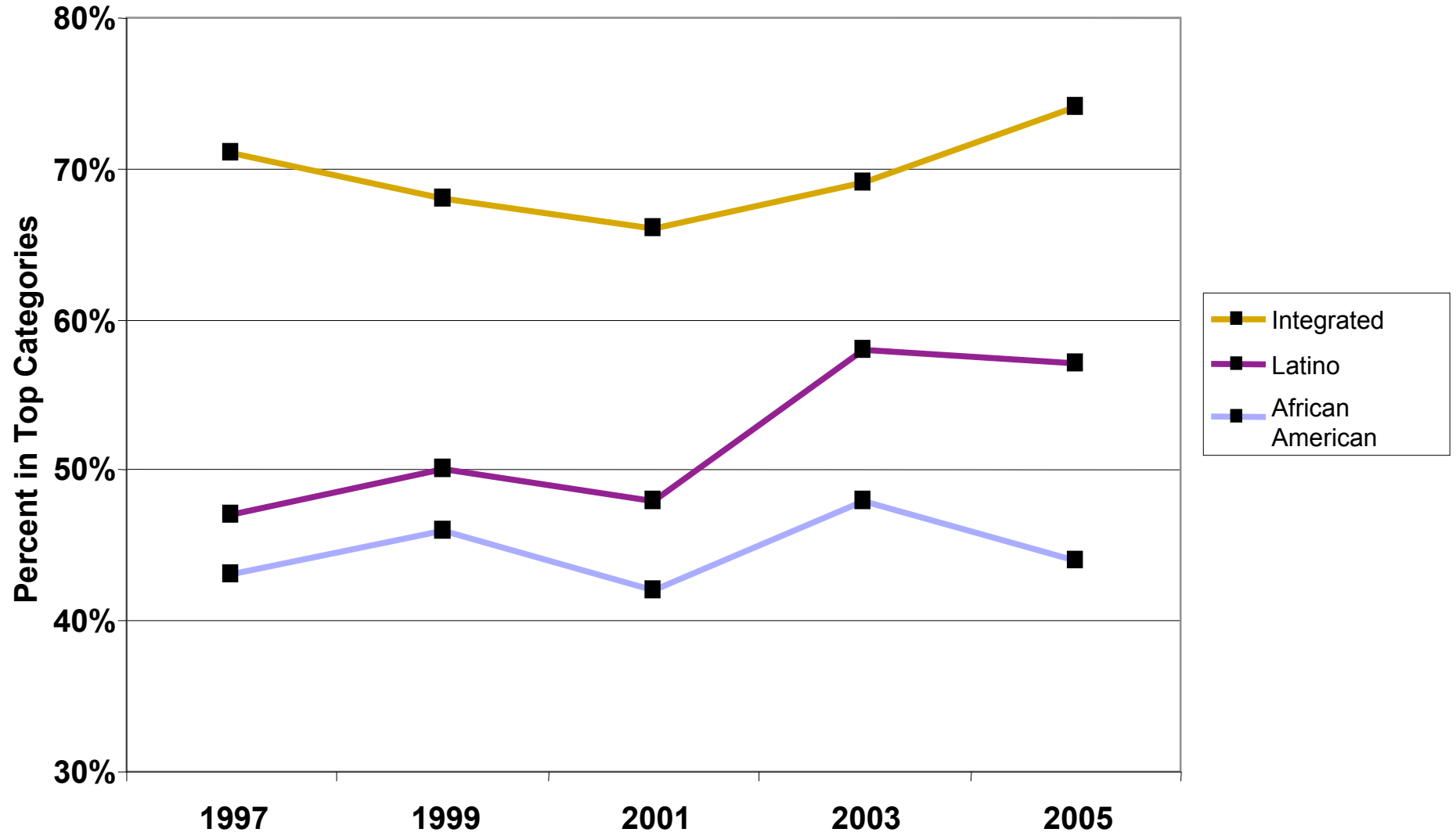
17 Year Olds – NAEP Reading



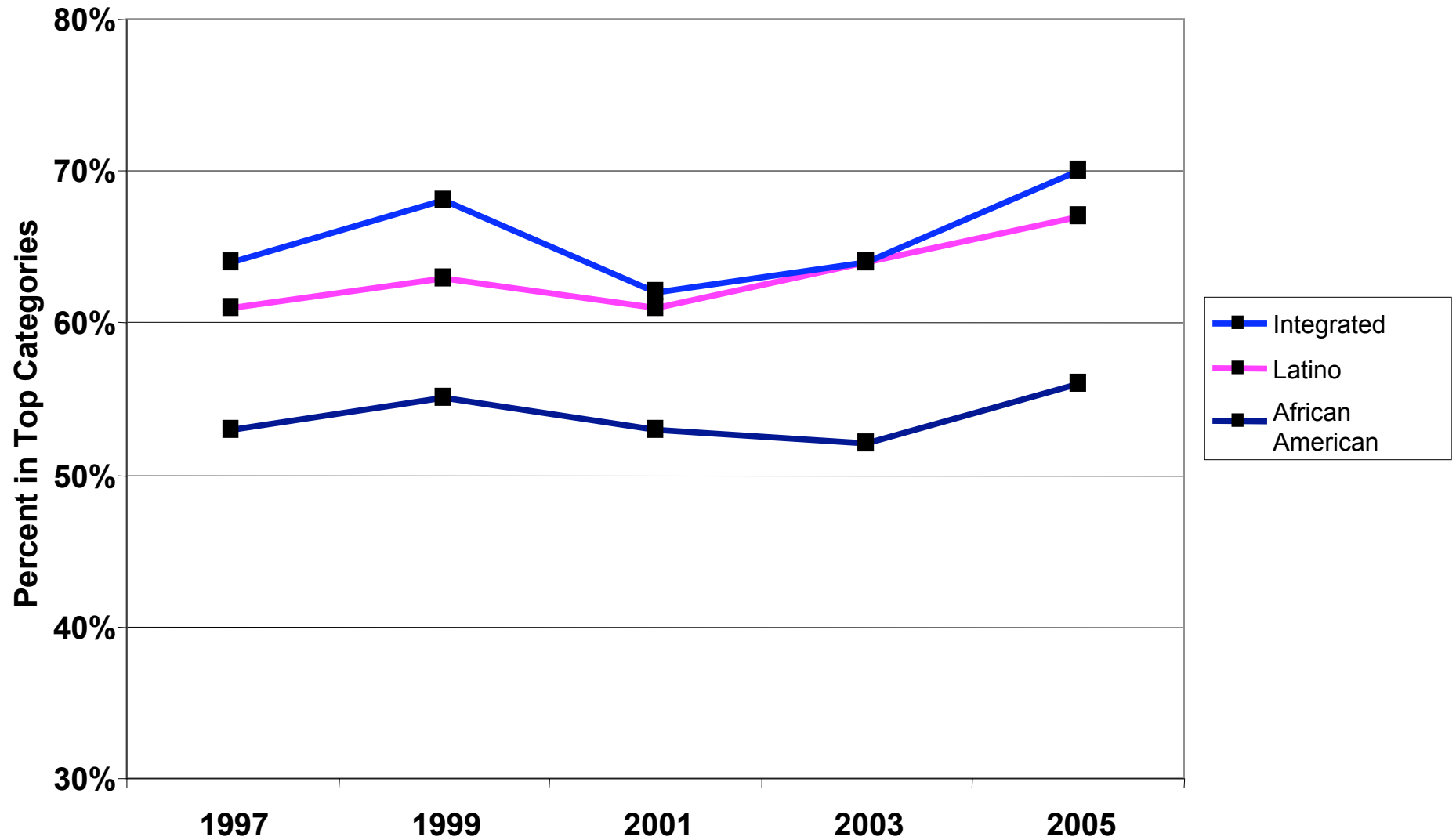
17 Year Olds – NAEP Math



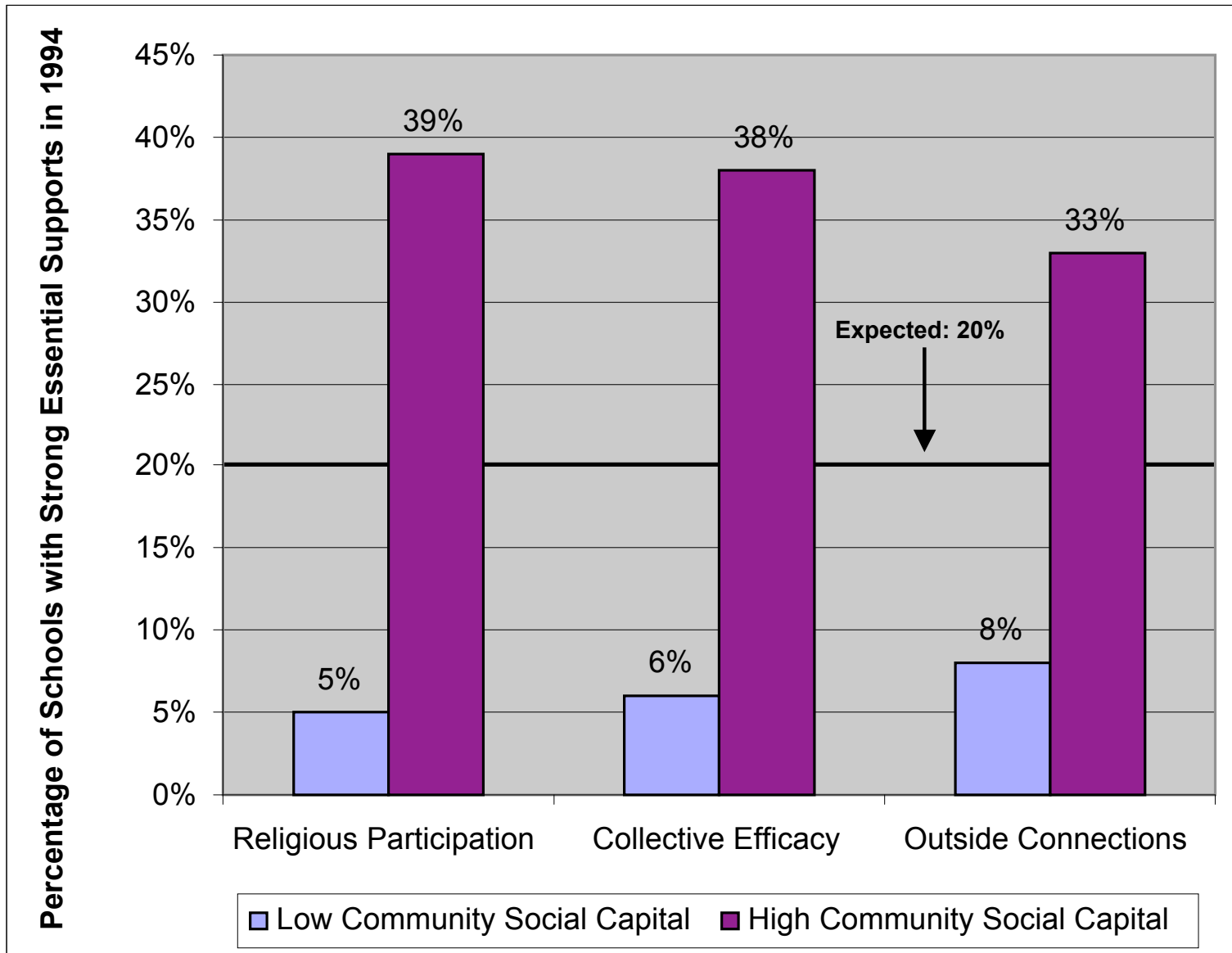
Teacher Parent Trust by Racial Composition of Schools



Collective Responsibility by Racial Composition of Schools



Community Social Capital Influences Essential Supports Inside the Schools



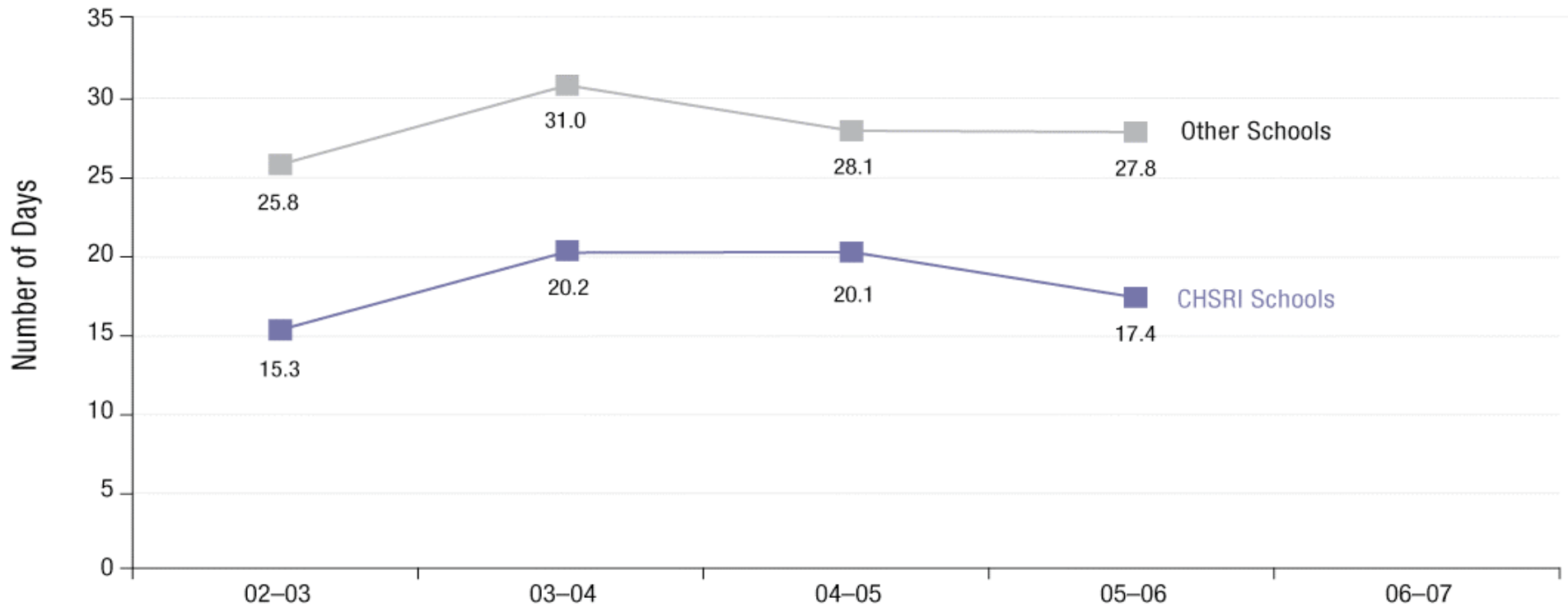
Students have fewer absences and failures in schools where relationships and trust are strong

	Fewer days absent	Fewer F's
Strong student teacher trust	4.6 days	1.56
Strong teacher personal support	3.2 days	0.70
Strong classroom personalism	2.8 days	1.00

Freshman Absences Were Consistently Lower at CHSRI Schools

Freshman Absences have been Consistently Lower at CHSRI Schools

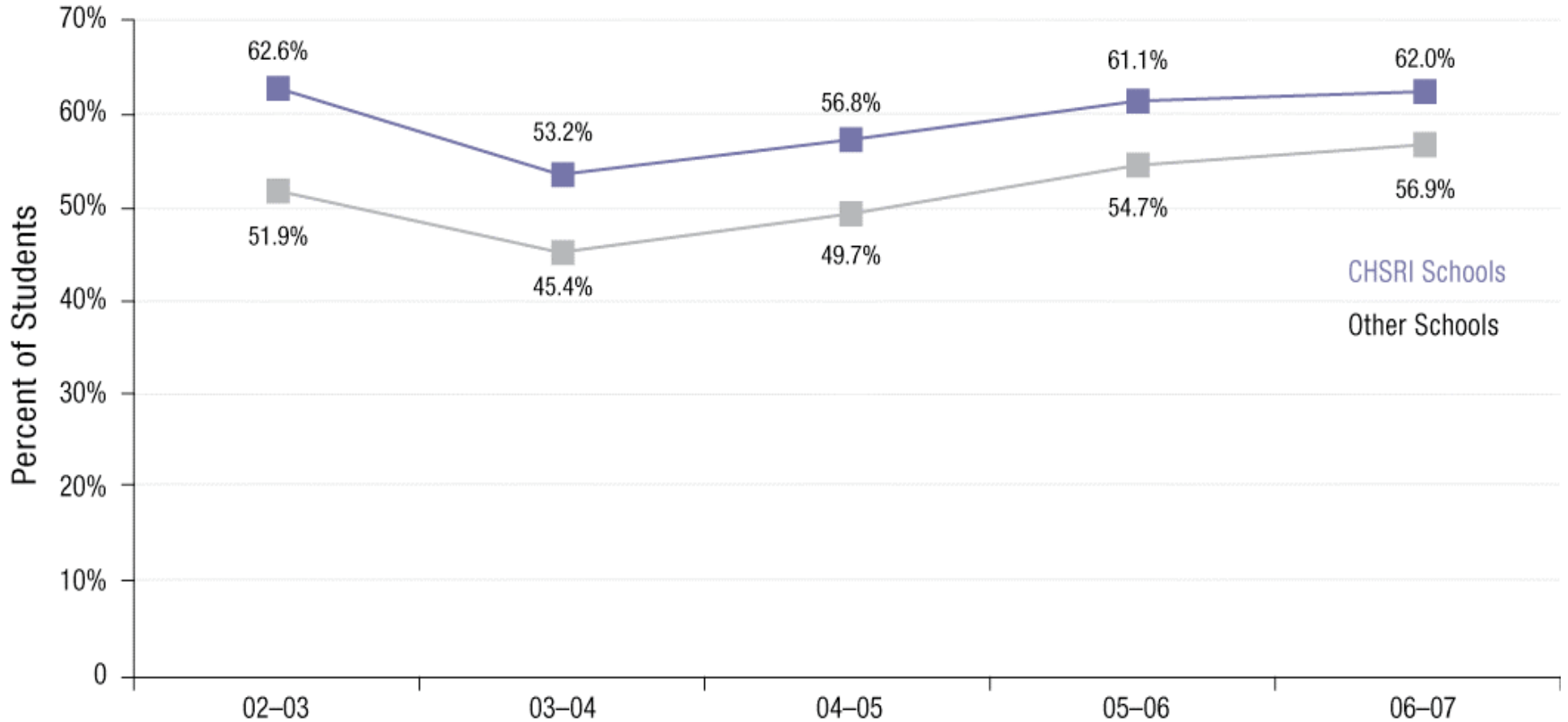
Average Number of Days Absent During the Year
First-Time Freshman
CHSRI Students and Similar Students at Other Schools



On-Track Performance Was Higher for CHSRI Schools

On-Track to Graduate
First-Time Freshman

CHSRI Students and Similar Students at Other Schools



CHSRI Schools Graduate More Students in 4 Years Than Other Schools with Similar Students

First-Time Freshman
CHSRI Students and Similar Students at Other Schools

